



Hand pallet trucks



Hand pallet trucks with weighing system



Scissor pallet trucks



Electric pallet trucks

! Please note our user instructions at the beginning of each chapter.

Material Handling Equipment

Pfaff-silberblau industrial trucks are ideal for transporting and stacking loads on pallets in factories.

The comprehensive range of products offers the correct model for numerous applications; be it for different route lengths or degrees of utilization, gradients and ramps or areas with a corrosion hazard.

From pallet trucks, manual stackers to electric stackers and elevating platforms – you will find the appropriate solution.

Load Moving Systems

Yale heavy load moving systems for the safe transportation of heavy loads of up to 100t.

Products range from separately used load moving skates to complete systems.

Table of Contents

	Page
<u>Hand pallet trucks</u>	<u>288 - 299</u>
<u>Hand pallet trucks with weighing system</u>	<u>300 - 303</u>
<u>Scissor pallet trucks</u>	<u>304 - 305</u>
<u>Electric pallet trucks</u>	<u>306 - 309</u>
<u>Manual drive stackers</u>	<u>310 - 317</u>
<u>Electric pedestrian stackers</u>	<u>318 - 322</u>
<u>Elevating platforms</u>	<u>323 - 333</u>
<u>Load moving systems</u>	<u>334 - 339</u>



Manual drive stackers



Load moving systems

This user information presents a general review regarding the application of material handling equipment and does not substitute the existing operating instructions for specific industrial trucks and elevating platforms!

Operating industrial trucks as well as lifting operations must be carried out by competent persons. When operated correctly, our products will offer the highest degree of safety, avoid damage to products and people and present a long life expectancy.

Modification of delivery condition

Design and construction of material handling products must not be altered by e.g. assembly of outside supplied components, bending, welding, grinding, cutting-off parts, adding boreholes, removal of safety devices or fitting of attachments.

Limitations of operation

Loading

The rated capacity (WLL) indicated on the product is the maximum load which must not be exceeded.

Transport of people

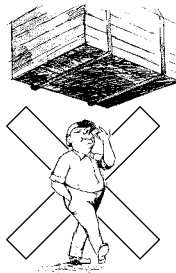
Transport of people with industrial trucks is generally forbidden!

Operation in danger zones

Lifting or transport of loads must be avoided while personnel are in the danger zone.

Do not allow people to stay on or below a raised load.

Do not place hands or feet under the raised fork frame or load on account of the imminent danger of crushing or shearing.



Inspection before starting work

- Prior to starting work, the unit must be inspected for obvious deficiencies and failures. Operational checks must be performed to ensure lifting, lowering and travel operate correctly.
- Check the parking brake is effective and the key switch operates correctly to protect against unauthorised use.
- Load carriage and forks must not show obvious defects (deflections, cracks or other wearing).
- Wheels and tires must not be defective.
- The hydraulic system must be in perfect order (lifting, lowering, density).
- The functional capability of the collision protective device should be checked.
- Battery charging status, fastening and cable connections of the battery as well as battery plug must be inspected for appropriate status as well as the battery cell lids (dry, clean).

For information on training please see page 4.

Application advices

- Our material handling equipment must be operated on in-plant areas only.
- Only use industrial trucks in perfect condition and with legible identity plate.
- Industrial trucks may only be operated by skilled people, who have been instructed (in theory and practice) by the responsible user.
- The travel speed must conform to local conditions.
- Industrial trucks must be operated on flat, level and even ground.
- The operator must make sure that the load unit is in perfect condition and safely attached.
- Pallets may be transported individually only.
- Industrial trucks must not be used as car jacks.
- Industrial trucks must not be used in areas which are not illuminated sufficiently.
- Forks may not be used as levers.
- Loading of just one fork, e.g. for lifting of a machine, is strictly forbidden.
- Industrial trucks may not be operated in direct contact with foodstuffs.
- Never turn the hand lever 90° in order to stop the truck.
- The industrial truck must not be operated in explosive atmospheres (special versions on request).

Maintenance and repair

- To ensure safe operation, all material handling equipment must be subjected to regular inspections according to the maintenance instructions provided by the manufacturer.
- Material handling equipment, which is due for maintenance normally at least once per year, unless adverse working conditions dictate shorter periods.
- Inspections and repairs must be performed by competent persons or specialist workshops that use original spare parts. Inspections and repairs have to be recorded consecutively.

Inspections

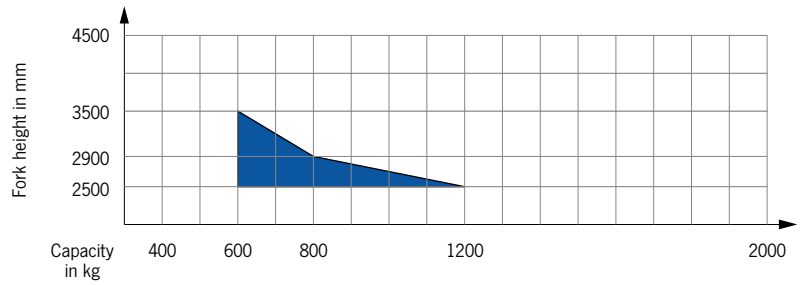
- Inspections are visual and functional and shall establish that the product has not been damaged by incorrect transport or storage. In addition check for damage, wear, corrosion or other deficiencies as well as completeness and function safety devices. Inspections are instigated by the user.
- Material handling products have to be cleaned prior to inspection. The cleaning procedure must not cause chemical damages (e.g. no acid – embrittlement) no incorrect temperature stress by e.g. flame cleaning or possible concealment of cracks due to excessive material abrasion (sand blasting).
We shall be pleased to consult you in this respect!
- **Inspection of fork frame**
The fork frame has to be checked regularly for obvious defects, deformations and cracks as well as wear and corrosion.
- **Inspection of control handle**
The control handle must be checked regularly for obvious defects, deformations, cracks. Moreover, check screws for fixed seat.
- **Inspection of oil level**
Check oil level every six months (Oil viscosity 30 Cst at 40 °C). At ambient temperature around 0 °C we recommend AVILUB RSL 22.
- **Inspection of lubrication and density**
Bolts, axles and push rods should be cleaned and lubricated depending on application with e.g. Shell FD or comparable grease.
- The hydraulic unit has to be checked regularly for density.



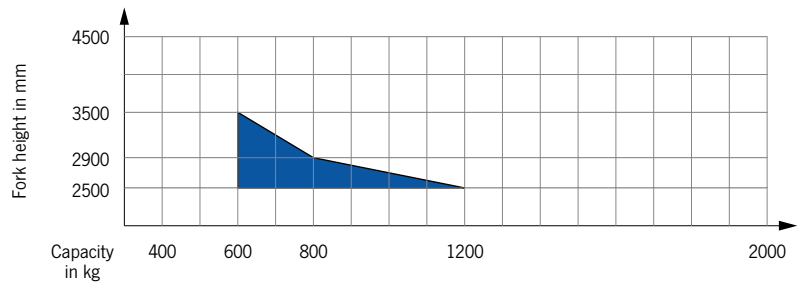
Load diagrams for residual carrying capacities

- Capacity restrictions start at a fork height $h_3 = 2500$ mm (EGV PSH 14-45T: 2900 mm).

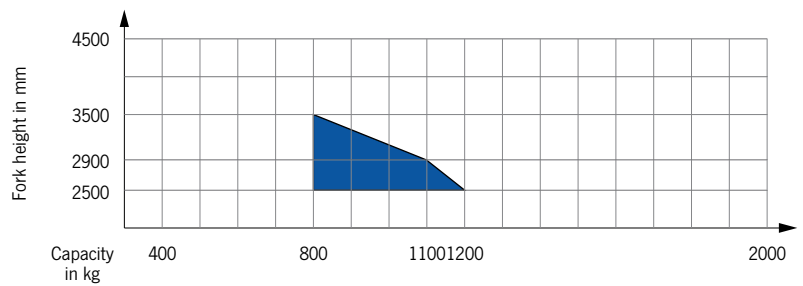
Model EHH PS 12-25/12-29/12-35



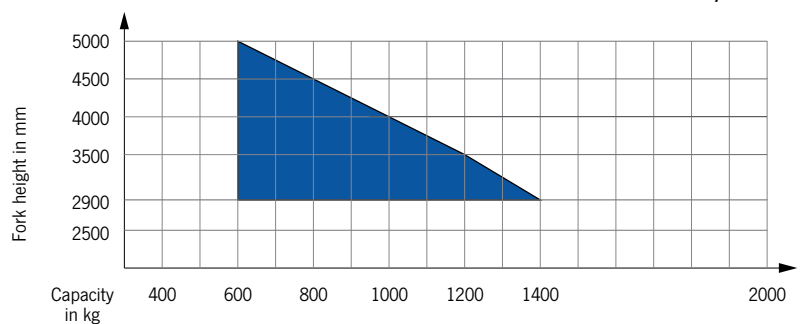
Model EGV PSL 12-25/12-29/12-35



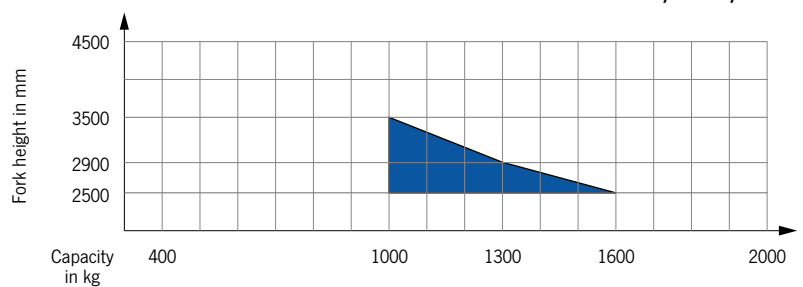
Model EGV PSH 12-25/12-29/12-35



Model EGV PSH 14-45T/14-50T



Model EGV PSH 16-25/16-29/16-35



Technical questionnaire for choosing a suitable material handling product

Company: _____

Date: _____

Contact: _____

e-Mail: _____

Phone: _____

Fax: _____

Capacity _____ kg

Fork height max. _____ mm

Free lift _____ mm

Required residual lifting capacity _____ mm

At fork height _____ mm

Headroom with mast retracted _____ mm

Lifting

- manual-hydraulic
- electric-hydraulic

Drive

- manual
- electric

Transport and stacking of:

- Palletised goods
- Long goods
- Loading lorries

Special requests

Lengths of application per shift

- up to 2 hours
- up to 4 hours
- up to 6 hours
- up to 8 hours

Shifts per day

Drivers platform

- yes
- no



Hand pallet truck model HU 26-115 TMt PROLINE MOTION

Capacity 2600 kg

For the professional transportation of palletised goods and box pallets under demanding conditions.

Features

- Ergonomic safety control handle for one-hand operation of lifting, driving and lowering.
- Ergonomic designed control handle for safe handling.
- Low maintenance high performance hydraulic pump with hard chromium plated piston and pressure relief valve.
- Frame and forks in robust steel construction, adjustable connecting rods, especially hardened axles and the high quality powder coating ensure a long life expectancy.
- Apron with shock absorbing rubber buffer in Pfaff-design.
- Steering angle of 105 degree to each side for easy handling in confined spaces.
- Entry rollers facilitate entry into bottom boarded pallets.



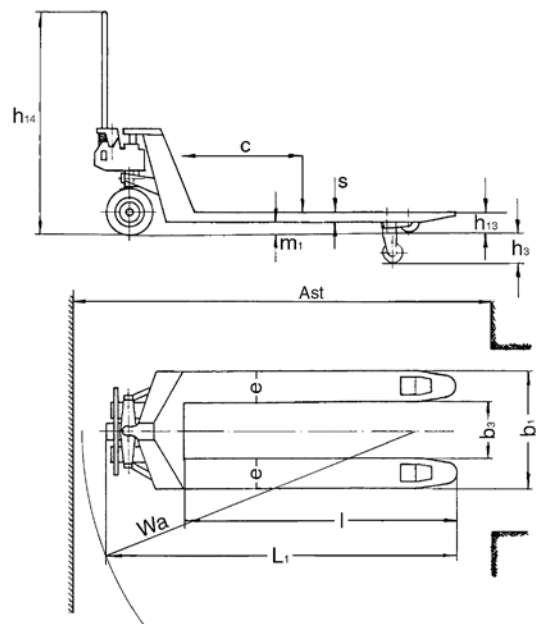
Option: Parking brake



Technical data model HU 26-115 TMt PROLINE MOTION

Model	HU 26-115 TMt	HU 26-115 TMt
Art.-No.	040009215	040009873
Capacity, kg	2600	2600
Load center c, mm	600	600
Weight, kg	86	86
Tyre type*	VG/PUR	PUR/PUR
Steering rollers, mm	200x50	200x50
Load rollers, mm	84x70	84x70
Number of wheels/load rollers	2/4	2/4
Stroke h3, mm	115	115
Height of control handle h14, mm	1200	1200
Fork height lowered h13, mm	85	85
Overall length L1, mm	1535	1535
Fork height s, mm	45	45
Fork width e, mm	160	160
Fork length l, mm	1150	1150
Outside dimension of forks b1, mm	540	540
Inside dimension of forks b3, mm	220	220
Ground clearance m1, mm	40	40
Aisle width pallet Ast, mm	1815	1815
Turning circle radius Wa, mm	1330	1330

*PUR... Polyurethane, VG... Solid rubber



Hand pallet truck model HU 26-115 TMt PROLINE MOTION
Hand pallet truck model HU 25-115 TS and ES SILVERLINE

Hand pallet truck
model HU 25-115 TS
SILVERLINE (Tandem rollers)

model HU 25-115 ES
SILVERLINE (Single rollers)

Capacity 2500 kg

For the professional transportation of palletised goods and box pallets under demanding conditions.

Features

- Ergonomic safety control handle for one-hand operation of lifting, driving and lowering.
- Ergonomic rubber control handle for safe handling.
- Low maintenance hydraulic pump with hard chromium plated piston.
- Frame and forks in robust steel construction, adjustable connecting rods, especially hardened axles and the high quality powder coating ensure a long life expectancy.



Option: Parking brake

Technical data model HU 25-115 TS SILVERLINE and model HU 25-115 ES SILVERLINE

Model	HU 25-115 TS	HU 25-115 TS	HU 25-115 TS	HU 25-115 TS	HU 25-115 TS	HU 25-115 ES
Art.-No.	034527100	034527101	034527108	034527130	034527184	034527106
Capacity, kg	2500	2500	2500	2500	2500	2500
Load center c, mm	600	600	600	600	600	600
Weight, kg	75	79	79	68	68	84
Tyre type*	VG/PA	VG/PUR	PUR/PUR	PA/PA	PUR/PA	VG/PUR
Steering rollers, mm	200x50	200x50	200x50	200x50	200x50	200x50
Load rollers, mm	82x70	82x70	82x70	80x70	80x70	82x93
Number of wheels/load rollers	2/4	2/4	2/4	2/4	2/4	2/2
Stroke h3, mm	115	115	115	115	115	115
Height of control handle h14, mm	1200	1200	1200	1200	1200	1200
Fork height lowered h13, mm	85	85	85	85	85	85
Overall length L1, mm	1535	1535	1535	1535	1535	1535
Fork height s, mm	45	45	45	45	45	45
Fork width e, mm	160	160	160	160	160	160
Fork length l, mm	1150	1150	1150	1150	1150	1150
Outside dimension of forks b1, mm	540	540	540	540	540	540
Inside dimension of forks b3, mm	220	220	220	220	220	220
Ground clearance m1, mm	40	40	40	40	40	40
Aisle width pallet Ast, mm	1815	1815	1815	1815	1815	1815
Turning circle radius Wa, mm	1330	1330	1330	1330	1330	1330

*PA... Polyamidee, PUR... Polyurethane, VG... Solid rubber

Hand pallet truck with a smaller or a wider loading width SILVERLINE

Capacity 1500 - 2500 kg

For the professional transportation of special pallets, e.g. brickyard pallets or american pallets.

Features

- Ergonomic safety control handle for one-hand operation of lifting, driving and lowering.
- Ergonomic rubber control handle for safe handling.
- Low maintenance high performance hydraulic pump with hard chromium plated piston and pressure relief valve.
- Frame and forks in robust steel construction, adjustable connecting rods, especially hardened axles and the high quality powder coating ensure a long life expectancy.
- Steering angle of 105 degree to each side for easy handling in confined spaces.



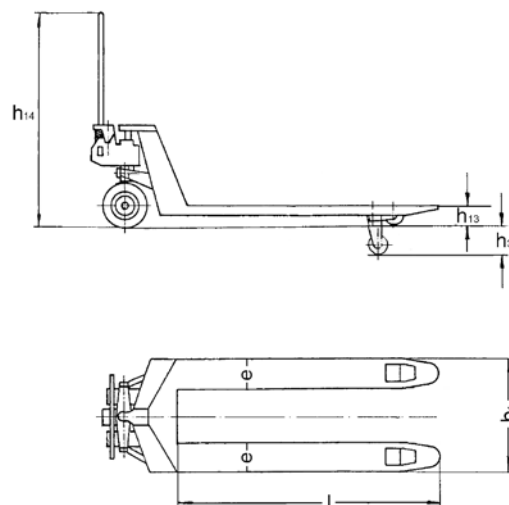
Option: Parking brake



Technical data hand pallet truck SILVERLINE

Model	HU 15-115 TP	HU 20-115 BTS	HU 25-115 BTS
Art.-No.	040006498	034527132	034527105
Capacity, kg	1500	2000	2500
Weight, kg	80	86	88
Tyre type*	PUR/PUR	VG/PUR	PUR/PUR
Steering rollers, mm	200x50	200x50	200x50
Load rollers, mm	82x70	82x70	82x70
Stroke h3, mm	115	115	115
Height of control handle h14, mm	1200	1200	1200
Fork height lowered h13, mm	85	85	85
Fork width e, mm	160	160	160
Fork length l, mm	1150	1150	1150
Outside dimension of forks b1, mm	450	850	685

*PUR... Polyurethane, VG... Solid rubber



Hand pallet truck with low height forks model HU 15-115 FTP PROLINE

Capacity 1500 kg

For the professional transportation of particularly low pallets.

Features

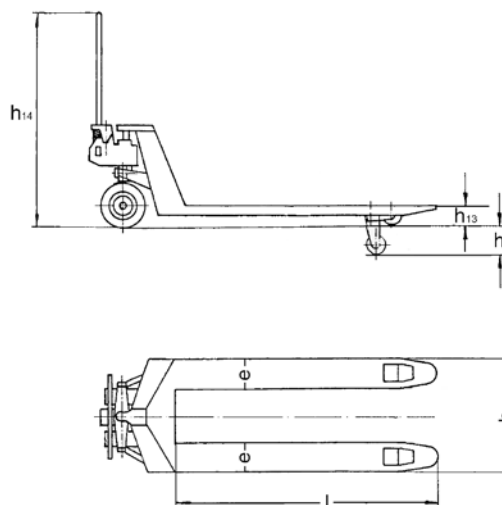
- Ergonomic safety control handle for one-hand operation of lifting, driving and lowering.
- Ergonomic rubber control handle for safe handling.
- Low maintenance high performance hydraulic pump with hard chromium plated piston and pressure relief valve.
- Frame and forks in robust steel construction, adjustable connecting rods, especially hardened axles and the high quality powder coating ensure a long life expectancy.
- Pallet entry height of only 51 mm for easy entry in particularly low pallets.
- Steering angle of 105 degree to each side for easy handling in confined spaces.



Technical data model HU 15-115 FTP

Model	HU 15-115 FTP
Art.-No.	034527124
Capacity, kg	1500
Weight, kg	84
Tyre type*	PUR/PA
Steering rollers, mm	180x50
Load rollers, mm	50x70
Stroke h3, mm	115
Height of control handle h14, mm	1200
Fork height lowered h13, mm	51
Fork width e, mm	160
Fork length l, mm	1150
Outside dimension of forks b1, mm	540

*PUR... Polyurethane, PA... Polyamide



Hand pallet truck PROLINE with short forks

Capacity 2500 kg

For the professional transportation of short palletised goods and box pallets under demanding conditions.

Features

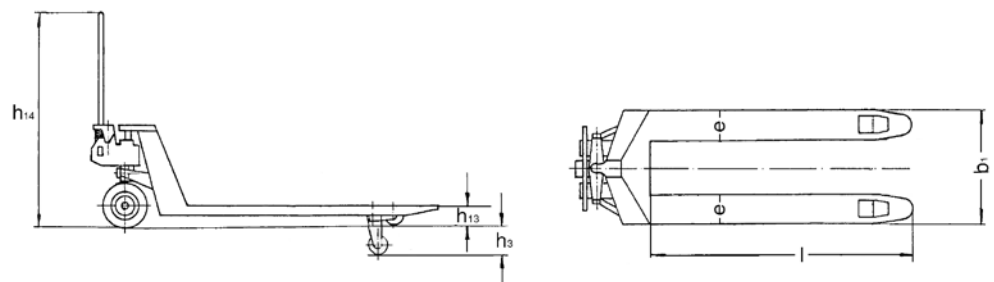
- Ergonomic safety control handle for one-hand operation of lifting, driving and lowering.
- Ergonomic rubber control handle for safe handling.
- Low maintenance high performance hydraulic pump with hard chromium plated piston and pressure relief valve.
- Frame and forks in robust steel construction, adjustable connecting rods, especially hardened axles and the high quality powder coating ensure a long life expectancy.
- Fork lengths from 600 up to 1000 mm for transportation of small loads.
- Steering angle of 105 degree to each side for easy handling in confined spaces.
- Available with tandem (TP) or single rollers (EP).



Technical data hand pallet truck PROLINE with short forks

Model	HU 25-60 EP	HU 25-80 EP	HU 25-90 EP	HU 25-100 EP	HU 25-80 TP	HU 25-90 TP	HU 25-100 TP
Art.-No.	040011694	034527150	034527151	034527152	034527153	034527154	034527155
Capacity, kg	2500	2500	2500	2500	2500	2500	2500
Weight, kg	59	67	72	77	71	76	81
Tyre type*	VG/PA	VG/PUR	VG/PUR	VG/PUR	VG/PUR	VG/PUR	VG/PUR
Steering rollers, mm	200x50	200x50	200x50	200x50	200x50	200x50	200x50
Load rollers, mm	82x70	82x93	82x93	82x93	82x70	82x70	82x70
Stroke h3, mm	115	115	115	115	115	115	115
Height of control handle h14, mm	1200	1200	1200	1200	1200	1200	1200
Fork height lowered h13, mm	85	85	85	85	85	85	85
Fork width e, mm	160	160	160	160	160	160	160
Fork length l, mm	600	800	900	1000	800	900	1000
Outside dimension of forks b1, mm	540	540	540	540	540	540	540

*PA... Polyamide, PUR... Polyurethane, VG... Solid rubber



Hand pallet truck PROLINE for heavy loads

Capacity 3000 - 5000 kg

For the professional transportation of heavy loads.

Features

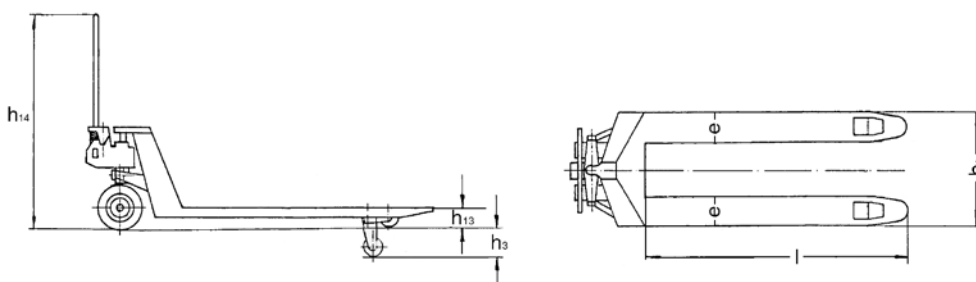
- Ergonomic safety control handle for one-hand operation of lifting, driving and lowering.
- Ergonomic rubber control handle for safe handling (only model HU 30-115 TP).
- Low maintenance high performance hydraulic pump with hard chromium plated piston and pressure relief valve.
- Frame and forks in robust steel construction, adjustable connecting rods, especially hardened axles and the high quality powder coating ensure a long life expectancy.



Technical data hand pallet truck PROLINE for heavy loads

Model	HU 30-115 TP	HU 50-115 TP	HU 50-200 TP
Art.-No.	034527128	034527058	034527056
Capacity, kg	3000	5000	5000
Weight, kg	95	240	300
Tyre type*	PUR/PUR	steel/steel	steel/steel
Steering rollers, mm	200x50	200x50	200x50
Load rollers, mm	82x70	82x80	82x80
Stroke h3, mm	115	110	110
Height of control handle h14, mm	1200	1220	1220
Fork height lowered h13, mm	85	90	105
Fork width e, mm	160	210	210
Fork length l, mm	1150	1150	2000
Outside dimension of forks b1, mm	540	580	700

*PUR... Polyurethane



Hand pallet truck PROLINE with extended forks

Capacity 2000 - 2500 kg

For the professional transportation of long palletised goods and box pallets under demanding conditions.

Features

- Ergonomic safety control handle for one-hand operation of lifting, driving and lowering.
- Ergonomic rubber control handle for safe handling.
- Low maintenance high performance hydraulic pump with hard chromium plated piston and pressure relief valve.
- Frame and forks in robust steel construction, adjustable connecting rods, especially hardened axles and the high quality powder coating ensure a long life expectancy.
- Fork lengths from 1300 up to 3000 mm for transportation of long and bulky loads.
- Steering angle of 105 degree to each side for easy handling in confined spaces.



Option: Parking brake

Driving and parking brake available as option.

Technical data hand pallet truck PROLINE with extended forks

Model	HU 25-130 TP	HU 20-150 TP	HU 20-180 TP	HU 20-200 TP	HU 20-250 TP	HU 20-300 TP
Art.-No.	034527160	034527161	034527200	034527201	034527202	034527203
Capacity, kg	2500	2000	2000	2000	2000	2000
Weight, kg	96	106	108	129	275	316
Tyre type*	VG/PUR	VG/PUR	VG/PUR	VG/PUR	PUR/PUR	PUR/PUR
Steering rollers, mm	200x50	200x50	200x50	200x50	200x50	200x50
Load rollers, mm	82x70	82x70	82x70	82x70	82x70	82x70
Stroke h3, mm	115	115	115	115	115	115
Height of control handle h14, mm	1200	1200	1200	1200	1200	1200
Fork height lowered h13, mm	85	85	85	85	85	85
Fork width e, mm	160	160	160	160	170	170
Fork length l, mm	1300	1500	1800	2000	2500	3000
Outside dimension of forks b1, mm	540	540	540	540	550	550

*PUR... Polyurethane, VG... Solid rubber Other versions available on request

Hand pallet truck PROLINE with extended forks and increased capacity

Capacity 2000 - 3500 kg

For the professional transportation of long palletised goods and box pallets under demanding conditions.

Features

- Ergonomic safety control handle for one-hand operation of lifting, driving and lowering.
- Ergonomic rubber control handle for safe handling.
- Low maintenance high performance hydraulic pump with hard chromium plated piston and pressure relief valve.
- Frame and forks in robust steel construction, adjustable connecting rods, especially hardened axles and the high quality powder coating ensure a long life expectancy.
- Fork lengths from 1500 up to 2000 mm for transportation of long goods.
- Steering angle of 105 degree to each side for easy handling in confined spaces.

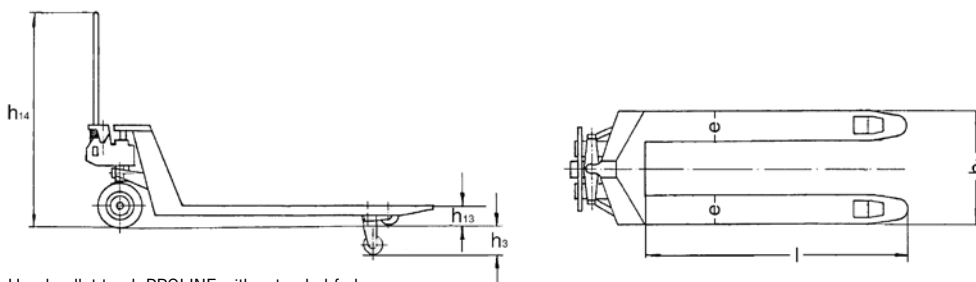


With extended forks up to 2000 mm and increased capacity up to 3500 kg.

Technical data hand pallet truck PROLINE with extended forks and increased capacity

Model	HU 30-150 TP	HU 30-180 TP	HU 35-200 TP
Art.-No.	034527204	034527205	034527206
Capacity, kg	3000	3000	3500
Weight, kg	121	139	148
Tyre type*	PUR/PUR	PUR/PUR	PUR/PUR
Steering rollers, mm	200x50	200x50	200x50
Load rollers, mm	82x70	82x70	82x70
Stroke h3, mm	115	115	115
Height of control handle h14, mm	1200	1200	1200
Fork height lowered h13, mm	85	85	85
Fork width e, mm	160	170	170
Fork length l, mm	1500	1800	2000
Outside dimension of forks b1, mm	540	550	550

*PUR... Polyurethane



Hand pallet truck PROLINE with extended forks
Hand pallet truck PROLINE with extended forks and increased capacity

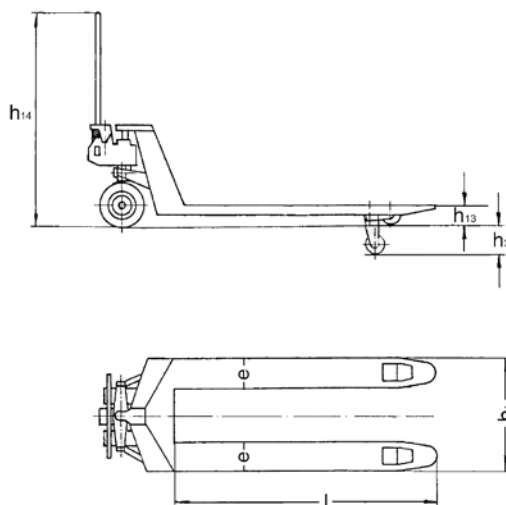
Hand pallet truck with quick-lift model HU 20-115 QLTP PROLINE

Capacity 2000 kg

For quick lifting and professional transportation of palletised goods and box pallets under demanding conditions.

Features

- Ergonomic safety control handle for one-hand operation of lifting, driving and lowering.
- Ergonomic rubber control handle for safe handling.
- Low maintenance high performance hydraulic pump with hard chromium plated piston and pressure relief valve.
- Quick-lift function for loads up to 200 kg for quick lifting of the load.
- Frame and forks in robust steel construction, adjustable connecting rods, especially hardened axles and the high quality powder coating ensure a long life expectancy.
- Steering angle of 105 degree to each side for easy handling in confined spaces.



Technical data model HU 20-115 QLTP

Model	HU 20-115 QLTP
Art.-No.	034527125
Capacity, kg	2000
Weight, kg	86
Tyre type*	VG/PUR
Steering rollers, mm	200x50
Load rollers, mm	82x70
Stroke h3, mm	115
Height of control handle h14, mm	1200
Fork height lowered h13, mm	85
Fork width e, mm	160
Fork length l, mm	1150
Outside dimension of forks b1, mm	540

*PUR... Polyurethane, VG... Solid rubber

Hand pallet truck with driving and parking brake model HU 25 FBTP PROLINE

Capacity 2500 kg

For the professional transportation of palletised goods and box pallets, on ramps, ascending slopes and on lorries.

Features

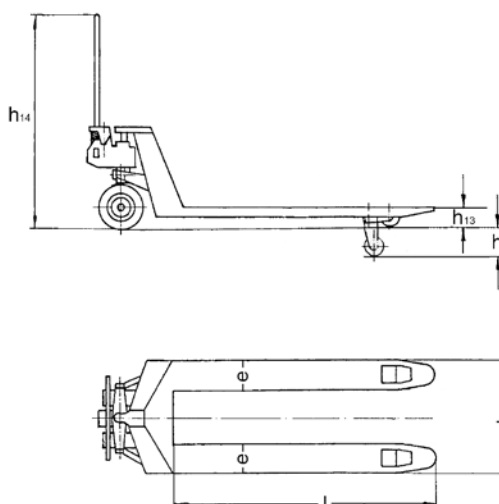
- Ergonomic safety control handle for one-hand operation of lifting, driving and lowering.
- Ergonomic rubber control handle for safe handling.
- Driving and park brake comfortably operated from the control handle.
- Low maintenance high performance hydraulic pump with hard chromium plated piston and pressure relief valve.
- Frame and forks in robust steel construction, adjustable connecting rods, especially hardened axles and the high quality powder coating ensure a long life expectancy.
- Steering angle of 105 degree to each side for easy handling in confined spaces.



Technical data model HU 25-115 FBTP

Model	HU 25-115 FBTP
Art.-No.	034527135
Capacity, kg	2500
Weight, kg	86
Tyre type*	VG/PUR
Steering rollers, mm	200x50
Load rollers, mm	82x70
Stroke h3, mm	115
Height of control handle h14, mm	1200
Fork height lowered h13, mm	85
Fork width e, mm	160
Fork length l, mm	1150
Outside dimension of forks b1, mm	540

*PUR... Polyurethane, VG... Solid rubber





Hand pallet truck, stainless steel version model HU 20-115 VATP PROLINE

Capacity 2000 kg

For the professional transportation of palletised goods in corrosive areas.

Features

- Ergonomic safety control handle for one-hand operation of lifting, driving and lowering.
- Low maintenance high performance hydraulic pump with hard chromium plated piston and pressure relief valve.
Hydraulic unit made of V4A – 316 stainless steel.
- Frame, adjustable connecting rods, bolts and the torsion tube are made of high quality V4A – 316 stainless steel.
- Steering angle of 105 degree to each side for easy handling in confined spaces.

The operator is responsible for an analysis of the working conditions in order to assess the suitability of the hand pallet truck.

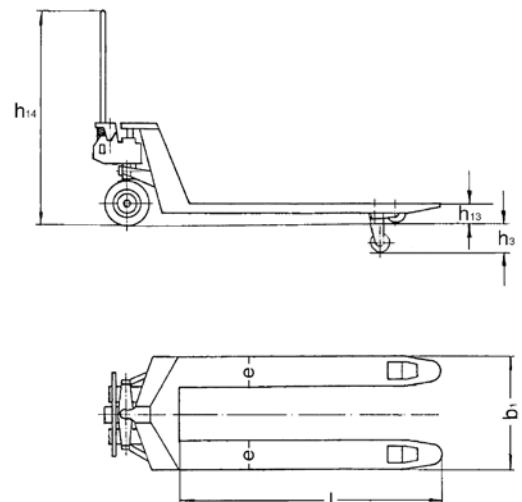


Available in explosion proof version.

Technical data model HU 20-115 VATP

Model	HU 20-115 VATP
Art.-No.	040005740
Capacity, kg	2000
Weight, kg	86
Tyre type*	PA/PA
Steering rollers, mm	200 x 50
Load rollers, mm	82 x 70
Stroke h3, mm	115
Height of control handle h14, mm	1200
Fork height lowered h13, mm	85
Fork width e, mm	160
Fork length l, mm	1150
Outside dimension of forks b1, mm	540

*PA... Polyamide



**Hand pallet truck,
galvanized version
model HU 25-115 GAL
PROLINE**

Capacity 2500 kg

For the professional transportation of palletised goods in corrosive areas.

Features

- Ergonomic safety control handle for one-hand operation of lifting, driving and lowering.
- Low maintenance high performance hydraulic pump with hard chromium plated piston and pressure relief valve.
- Galvanized frame with a layer of 100 µm, cold galvanized control handle and hydraulic system, stainless steel running gear, ball bearings and axles ensure high chemical resistance.
- Steering angle of 105 degree to each side for easy handling in confined spaces.

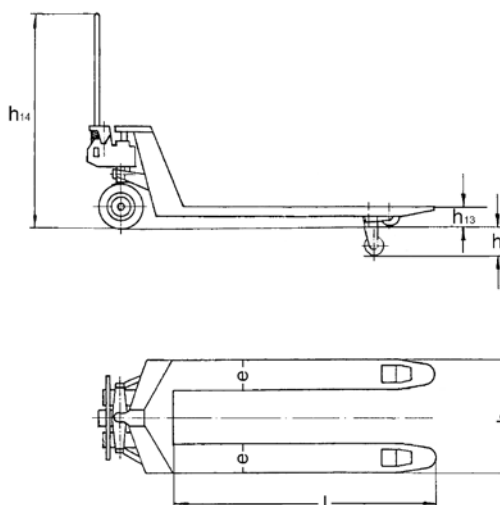


! The operator is responsible for an analysis of the working conditions in order to assess the suitability of the hand pallet truck.

Technical data model HU 25-115 GAL

Model	HU 25-115 GAL
Art.-No.	034527170
Capacity, kg	2500
Weight, kg	86
Tyre type*	PA/PA
Steering rollers, mm	200 x 50
Load rollers, mm	82 x 70
Stroke h3, mm	115
Height of control handle h14, mm	1200
Fork height lowered h13, mm	85
Fork width e, mm	160
Fork length l, mm	1150
Outside dimension of forks b1, mm	540

*PA... Polyamide





Hand pallet truck with weighing system model HU W-20 SL SILVERLINE

Capacity 2000 kg

For transportation and weighing of palletised goods and box pallets. For simple weighing jobs and a rough calculation of total weights, e.g. when loading lorries.

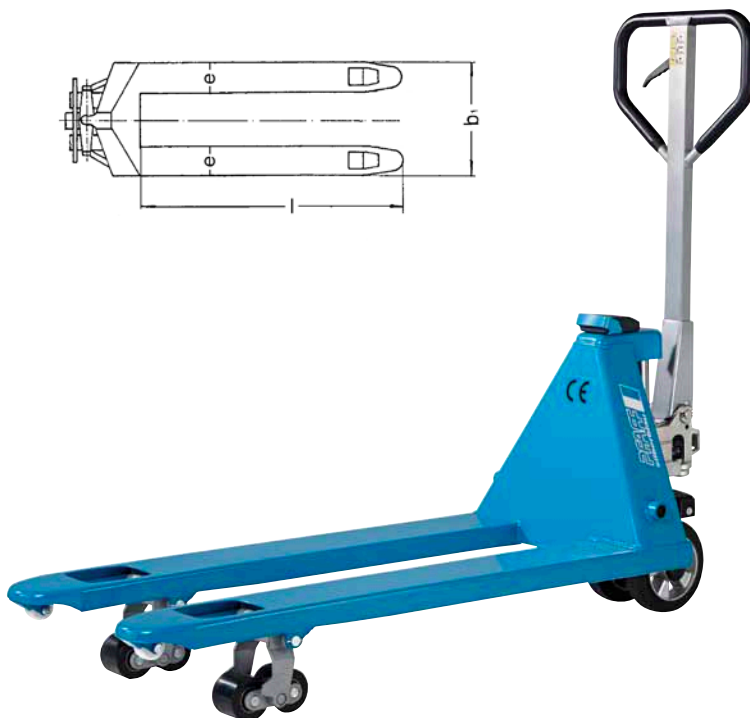
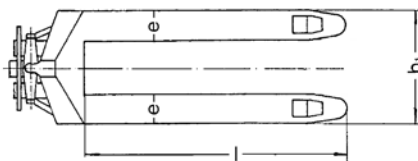
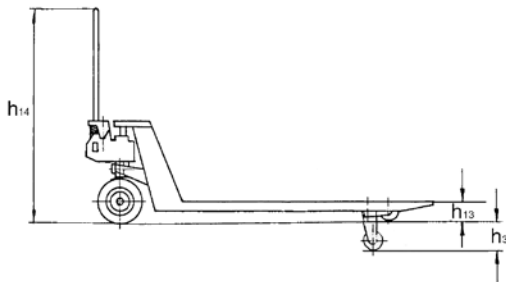
Features

- The basic truck is the model Silverline HU 25-115.
- Ergonomic safety control handle for one-hand operation of lifting, driving and lowering.
- Ergonomic rubber control handle for safe handling.
- Measuring range from 0 up to 2000 kg in 5 kg steps.
- Easy to read LCD display.
- Accuracy:
 - 0 - 500 kg → ± 10 kg
 - 500 - 1000 kg → ± 20 kg
 - 1000 - 2000 kg → ± 30 kg
- The weighing system is calibrated at the factory.

Scope of delivery

- 2 x 1.5 V AA batteries (sufficient for approx. 3000 weighing operations)

Driving and parking brake available as option.



Technical data model HU W-20 SL

Model	HU W 20 SL
Art.-No.	040048616
Capacity, kg	2000
Load center c, mm	600
Weight, kg	76
Tyre type*	VG/PUR
Steering rollers D, mm	200x50
Load rollers D1, mm	82x70
Number of wheels/load rollers	2/4
Stroke h2, mm	115
Lifting height h3, mm	200
Height of control handle h14, mm	1200
Fork height lowered h13, mm	85
Overall length L1, mm	1535
Fork height s, mm	45
Fork width e, mm	160
Fork length l, mm	1150
Outside dimension of forks b1, mm	540
Ground clearance m1, mm	40
Turning circle radius, mm	1330
Ambient temperature	-5 °C up to +40 °C

*VG... Solid rubber, PUR... Polyurethane

Hand pallet truck with weighing system model HU W-20 S SILVERLINE

Capacity 2000 kg

For transportation and weighing of palletised goods and box pallets.

Features

- Ergonomic safety control handle for one-hand operation of lifting, driving and lowering.
- Ergonomic rubber control handle for safe handling.
- Measuring range from 0 up to 2000 kg in 1 kg steps.
- Easy to read LCD display.
- Accuracy $\pm 0.25\%$ of the end value.
- The readings start at 1.0 kg.
- The weighing system is calibrated at the factory.
- The system is designed for simple weighing jobs, such as batching or filling processes.
- Low maintenance hydraulic pump with hard chromium plated piston and pressure relief valve.
- Frame and forks in robust steel construction, adjustable connecting rods, especially hardened axles and the high quality powder coating ensure a long life expectancy.
- Steering angle of 105 degree to each side for easy handling in confined spaces.

Scope of delivery

- 4x1.5 V batteries

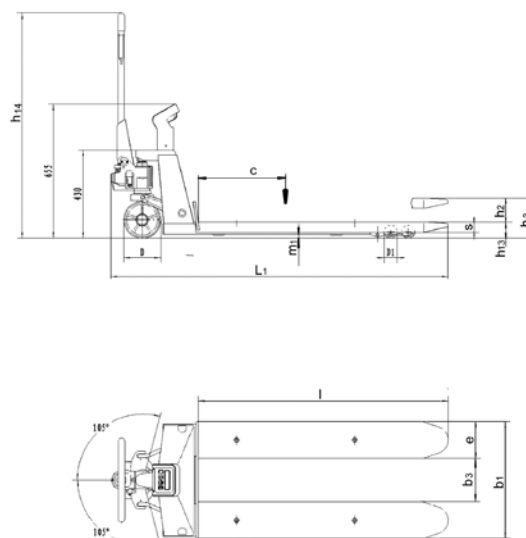


! Driving and parking brake available as option.

Technical data model HU W-20 S

Model	HU W 20 S
Art.-No.	040016431
Capacity, kg	2000
Load center c, mm	600
Weight, kg	129
Tyre type*	PUR/PUR
Steering rollers D, mm	180x50
Load rollers D1, mm	74x70
Number of wheels/load rollers	2/4
Stroke h2, mm	110
Lifting height h3, mm	195
Height of control handle h14, mm	1210
Fork height lowered h13, mm	85
Overall length L1, mm	1580
Fork height s, mm	50
Fork width e, mm	180
Fork length l, mm	1150
Outside dimension of forks b1, mm	570
Inside dimension of forks b3, mm	210
Ground clearance m1, mm	35
Turning circle radius, mm	1330
Ambient temperature	-10 °C up to +40 °C

*PUR... Polyurethane



**Hand pallet truck
with weighing system
model HU PW 20T
PROLINE**

Capacity 2000 kg

Fitted with four high quality load cells the hand pallet truck becomes a mobile weighing system. Special calibration on request. The robust construction of the basic truck and high quality electronics make demanding applications possible.

Features

- LED display (83plus)* has 6 characters, the characters are 20 mm in height.
- Weighing operations: Tare (gross/net), count, add, automatic return to zero.
- Accuracy $\pm 0.1\%$ of the end value.
- Pallet entry height of only 85 mm.
- The battery capacity provides for around 30 operating hours.
- The weighing system is calibrated at the factory.

Multi range scale	
Weight	Measuring steps
0 - 500 kg	0.2 kg
500 - 1000 kg	0.5 kg
1000 - 2000 kg	1.0 kg

Options

- With printer
- Change setting of partition

Scope of delivery

- Battery and battery charger

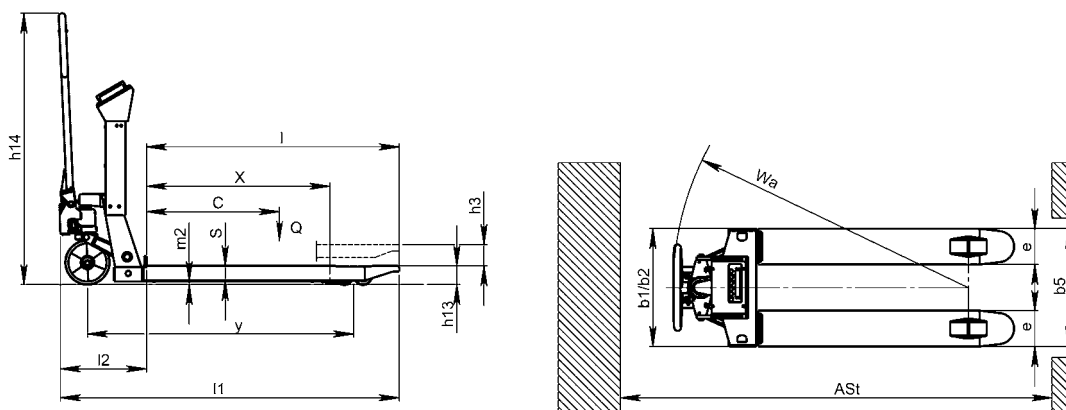


*Made by RHEWA

Technical data model HU PW 25 T PROLINE

Model	HU PW 20 T	HU PW 20 TR - 83plus with printer
Art.-No.	21220600	21220601
Capacity Q, kg	2000	2000
Load center c, mm	600	600
Load distance x, mm	850	850
Wheelbase y, mm	1205	1205
Weight, kg	145	145
Tyre type*	PUR/PUR	PUR/PUR
Steering rollers, mm	200x50	200x50
Load rollers, mm	82x70	82x70
Number of wheels/load rollers	2/4	2/4
Stroke h3, mm	115	115
Height of control handle max. h14, mm	1230	1230
Fork height lowered h13, mm	90	90
Overall length l1, mm	1525	1525
Length incl. apron l2, mm	375	375
Overall width b1/b2, mm	560	560
Fork height s, mm	60	60
Fork width e, mm	185	185
Fork length l, mm	1140	1140
Outside dimension of forks b5, mm	575	575
Ground clearance, wheelbase centre m2, mm	20	20
Aisle width pallet Ast, mm	1832	1832
Turning circle radius Wa, mm	1367	1367

*PUR... Polyurethane



LED-display 83plus



Option:
with printer



Scissor pallet truck with manual-hydraulic lift model HU HS 10 A

Capacity 1000 kg,
fork height max. 800 mm

A combination of hand pallet truck and elevating platform for the transport and raising of palletised loads to various departments.

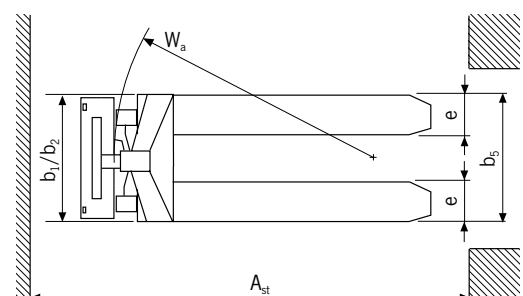
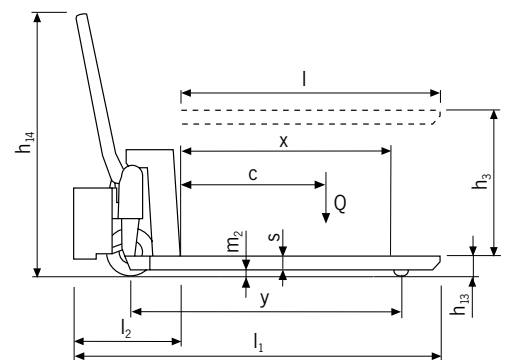
Features

- Safety control handle with the functions:
 - Quick-lift – lifting – lowering –
- Lowering speed can be finely metered for sensitive lowering of the load.
- One-stage hydraulic for increased robustness.
- Quick-lift for loads up to 250 kg.
- Overload protection by pressure relief valve.
- Safety supports guarantee sure standing when the forks are raised.
- Low noise and smooth running with standard tyres: steer rollers and load rollers – polyurethane.

Technical data model HU HS 10 A

Model	HU HS 10 A
Art.-No.	26600010
Capacity Q, kg	1000
Load center c, mm	600
Weight, kg	140
Tyre type**	PUR/PUR
Steering rollers, mm	180 x 50
Load rollers, mm	78 x 60
Number of wheels/load rollers	2/2
Stroke h3, mm	715
Height of control handle max. h14, mm	1235
Fork height lowered h13, mm	85
Overall length l1, mm	1650
Overall width b1/b2, mm	540
Fork height s, mm	50
Fork width e, mm	160
Fork length l, mm	1150
Outside dimension of forks b5, mm	540
Ground clearance, wheelbase centre m2, mm	35
Aisle width pallet Ast, mm	1900
Turning circle radius Wa, mm	1440

**PUR ... Polyurethane



Scissor pallet truck with electric-hydraulic lift model HU ES 10A

Capacity 1000 kg,
fork height max. 800 mm

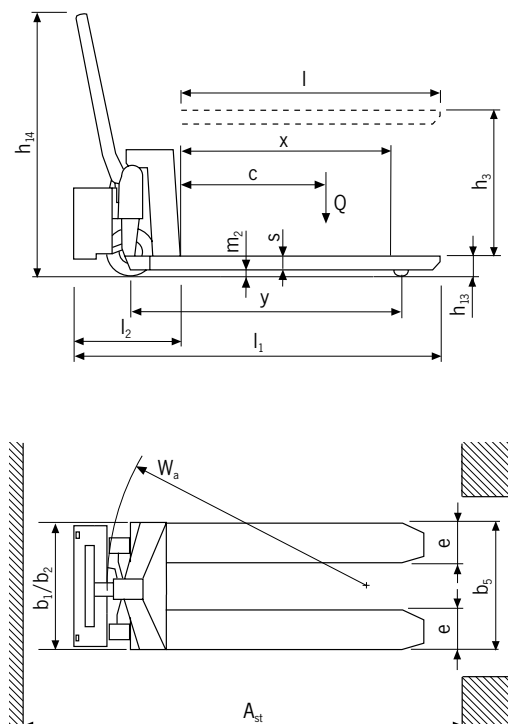
The model HU ES 10 A increases the usefulness of the HU HS 10 A by saving operating time for demanding applications with frequent lifting and lowering operations.

Features

- Ergonomic control button for the hydraulic unit fitted in the handle.
- In case of a battery failure the manual use of lifting and lowering is still guaranteed.
- Quick electric-hydraulic lifting of the load, pressure relief valve protects against overloading.
- Low noise and smooth running due to polyurethane steering and load rollers as standard.
- Additional tilting protection for the load rollers.

Scope of delivery

- Battery and battery charger



Technical data model HU ES 10A

Model	HU ES 10A
Art.-No.	26900010
Capacity Q, kg	1000
Load center c, mm	600
Weight, kg	167
Tyre type**	PUR/PUR
Steering rollers, mm	180x50
Load rollers, mm	75x50
Number of wheels/load rollers	2/2
Stroke h_3 , mm	715
Height of control handle max. h_{14} , mm	1230
Fork height lowered h_{13} , mm	85
Overall length l_1 , mm	1740
Overall width b_1/b_2 , mm	540
Fork height s , mm	50
Fork width e , mm	160
Fork length l , mm	1170
Outside dimension of forks b_5 , mm	540
Ground clearance, wheelbase centre m_2 , mm	35
Aisle width pallet A_{st} , mm	1990
Turning circle radius W_a , mm	1450
Battery charger, V/A	220/8
Battery voltage, capacity K5, V/Ah	12/65

**PUR... Polyurethane

Hand pallet truck with electric drive model JOKER CLASSIC PROLINE

Capacity 1500 kg

Ideal for the internal application of transporting palletised goods on even ground, covering short distances.

Compact dimensions and easy handling turn the JOKER CLASSIC PROLINE into a real alternative to a standard hand pallet truck. An electric control and the powerful motor ensure a finely metered and rapid start.

A high performance hydraulic pump guarantees a smooth lifting of the load.

Features

- Safety control handle with the functions: lifting, driving and lowering.
- Lowering speed can be finely metered for sensitive lowering of the load.
- Pressure relief valve as protection against overload.
- Maintenance-free motor and batteries.
- Quick charging at every 230V power socket due to integrated battery charger.
- Strong DC middle-motor with electromagnetic brake.
- Battery charge indicator
- Entry rollers facilitate entry into bottom-boarded pallets.

Scope of delivery

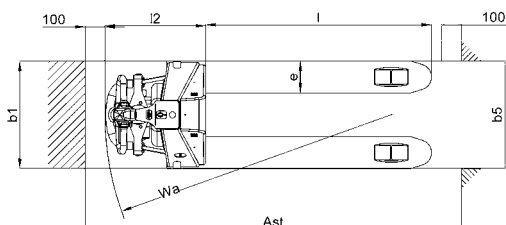
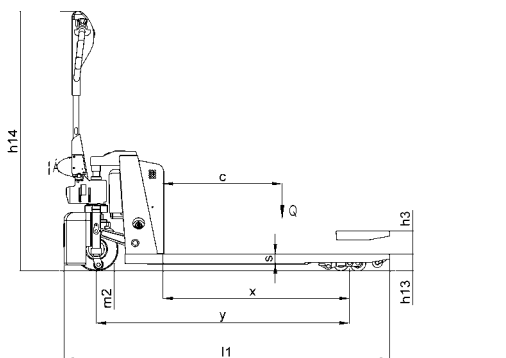
- Maintenance free lead-batteries 2x 12V/40Ah and integrated battery charger.



Technical data model JOKER CLASSIC PROLINE

Model	JOKER CLASSIC PROLINE
Art.-No.	040031013
Actuation	electric
Capacity, kg	1500
Load center c, mm	600
Weight (with battery), kg	160
Tyre type*	PUR+PUR/PUR
Steering rollers, mm	220x70+50x30
Load rollers, mm	80x70
Number of wheels/load rollers (x=driven)	2+1x/4
Stroke h3, mm	115
Height of control handle max. h14, mm	1310
Fork height lowered h13, mm	85
Overall length l1, mm	1645
Overall width b1, mm	540
Fork height s, mm	48
Fork width e, mm	160
Fork length l, mm	1150
Outside dimension of forks b5, mm	540
Ground clearance m2, mm	37
Aisle width pallet Ast, mm	1895
Turning circle radius Wa, mm	1430
Steering angle, degrees	180
Actuation	manual-hydraulic
Travel speed with/without load, km/h	3/3.3
Lowering speed with/without load, m/s	metered
Gradient with/without load, %	5/8
Service brake	electric
Drive motor rating S2 60 min, kW	0.5
Battery	starter
Battery voltage, V/Ah	2 x 12/40
Battery weight, kg	20
Type of control	impulse

*PUR... Polyurethane





Technical data model EGU PS 14

Model	EGU PS 14 S	EGU PS 14 P
Art.-No.	040046050	040040500
Actuation	electric	electric
Operation	pedestrian	pedestrian
Capacity, kg	1400	1400
Load center c, mm	600	600
Wheelbase Y, mm	1195	1195
Weight (with battery), kg	203	246
Tyre type*	VG/PUR	VG/PUR
Steering rollers l x d, mm	250x76+100x40	250x76+100x40
Load rollers l x d, mm	82x80	82x80
Number of wheels/load rollers (x=driven)	2+1x/2	2+1x/2
Stroke h3, mm	115	115
Fork height max. h15, mm	200	200
Height of control handle max. h14, mm	1241	1241
Fork height lowered h13, mm	85	85
Overall length L1, mm	1650	1650
Length incl. apron L2, mm	500	500
Overall width B, mm	720	720
Fork height s, mm	50	50
Fork width e, mm	150	150
Fork length l, mm	1150	1150
Outside dimension of forks b1, mm	525	525
Clearance fork tip-roller X	215	215
Aisle width pallet Ast, mm	1900	1900
Turning circle radius Wa, mm	1435	1435
Travel speed with/without load, km/h	4.5/4.7	4.5/4.7
Lifting speed with/without load, m/s	0.02/0.03	0.02/0.03
Lowering speed with/without load, m/s	0.04	0.04
Gradient with/without load, %	5/10	5/10
Service brake	electric	electric
Drive motor rating, kW	0.7	0.7
Hoist motor rating, kW	0.4	0.4
Battery	starter	traction
Battery voltage, capacity at 20 h, V/Ah	24/74	24/132
Type of control	impulse	impulse

*PUR... Polyurethane, VG... Solid rubber

Electric pallet truck model EGU PS 14

Capacity 1400 kg

Electrical drive, electrical lifting

Ideal unit for working on ramps or taking along on a lorry.

Features

- Multifunctional control handle for easy handling. The electric pallet lift truck will automatically be slowed down if the control handle is no longer in the users hand.
- Reliable impulse control for stepless regulation of driving speed.
- Slow moving function at upright handle position for the use in confined spaces.
- Battery size depends on the type of application.

Options

- Tandem rollers

Scope of delivery

- Battery and battery charger included

Electric pallet truck model EGU PS 20

Capacity 2000 kg

Electrical drive, electrical lifting

Ideal unit for working on ramps or taking along on a lorry.

Features

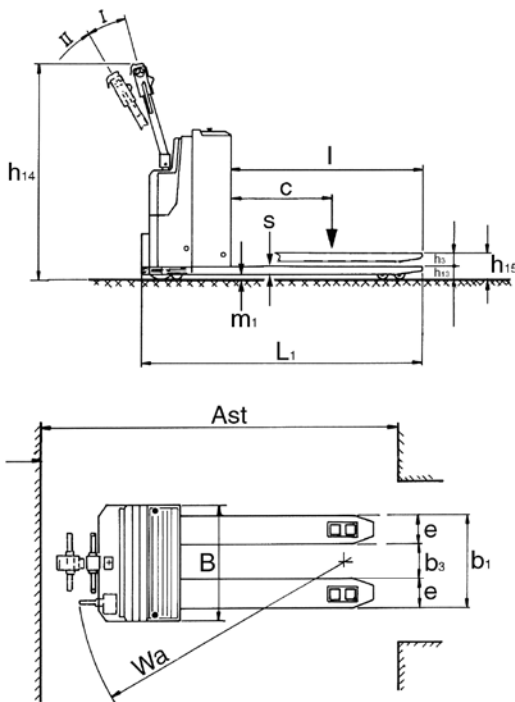
- Multifunctional control handle for easy handling. The electric pallet lift truck will automatically be slowed down if the control handle is no longer in the users hand.
- Reliable impulse control for stepless regulation of driving speed.
- Slow moving function at upright handle position for the use in confined spaces.
- Battery size depends on the type of application.

Options

- Tandem rollers



Battery and battery charger are to be ordered separately.



Technical data model EGU PS 20

Model	EGU PS 20
Art.-No.	040046842
Actuation	electric
Operation	pedestrian
Capacity, kg	2000
Load center c, mm	600
Wheelbase Y, mm	1373
Weight (with battery), kg	520
Tyre type*	PUR/PUR
Steering rollers l x d, mm	230x75+100x40
Load rollers l x d, mm	85x90
Number of wheels/load rollers (x=driven)	2+1x/2
Stroke h3, mm	115
Fork height max. h15, mm	200
Height of control handle max. h14, mm	1320
Fork height lowered h13, mm	85
Overall length L1, mm	1715
Length incl. apron L2, mm	567
Overall width B, mm	716
Fork height s, mm	55
Fork width e, mm	170
Fork length l, mm	1150
Outside dimension of forks b1, mm	550
Clearance fork tip-roller X	215
Aisle width pallet Ast, mm	2000
Turning circle radius Wa, mm	1575
Travel speed with/without load, km/h	6.0/6.0
Lifting speed with/without load, m/s	0.04/0.05
Lowering speed with/without load, m/s	0.05/0.04
Gradient with/without load, %	10/20
Service brake	electric
Drive motor rating, kW	1.2
Hoist motor rating, kW	2.2
Battery**	PzS
Battery voltage, capacity at 20 h, V/Ah	24V/180-230 Ah
Type of control	impulse

*PUR... Polyurethane

**PzS... Traction battery



Hand stacker model HG

Capacity 300 and 500 kg

Ideal for the occasional, internal application of stacking and transporting of palletised goods.

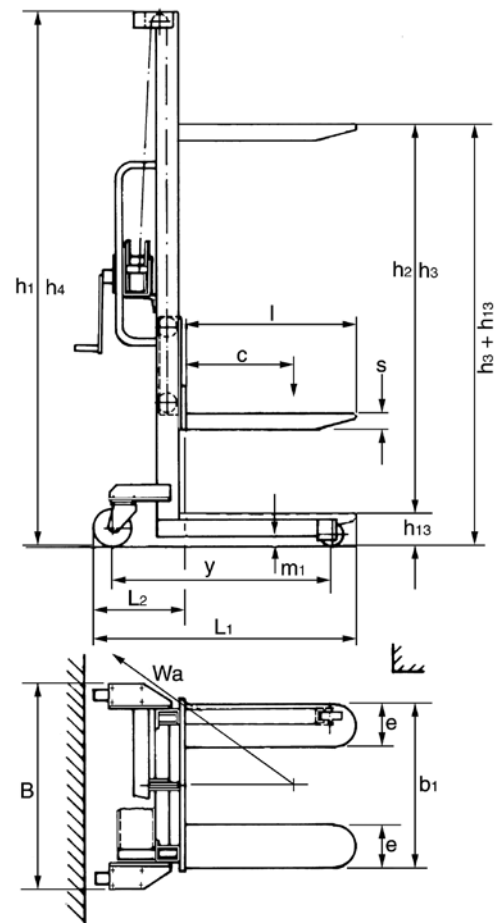
Features

- Manual winch for exact positioning of the height.
- Handlebar for easy operation.
- C-profile mast with maintenance free pulley and guide rollers with ball bearings.
- Steering roller with brake for safe parking of the hand stacker.

Technical data model HG

Model	HG 0315	HG 0515
Art.-No.	034518016	034518017
Capacity, kg	300	500
Load center c, mm	400	600
Wheelbase y, mm	850	1050
Weight, kg	80	90
Tyre type*	PA/PA	PA/PA
Steering rollers, mm	125x40	125x40
Load rollers, mm	75x30	75x30
Number of wheels/load rollers	2/2	2/2
Height, mast retracted h1, mm	1840	1840
Free lift h2, mm	1410	1410
Stroke h3, mm	1410	1410
Height, mast extended h4, mm	1840	1840
Lifting height max. h3+h13, mm	1500	1500
Fork height lowered h13, mm	90	90
Overall length L1, mm	1020	1320
Length incl. apron L2, mm	362	362
Overall width B, mm	710	710
Fork height s, mm	50	50
Fork width e, mm	160	160
Fork length l, mm	600	900
Outside dimension of forks b1, mm	580	580
Ground clearance m1, mm	30	30
Turning circle radius Wa, mm	855	1155
Lift per one crank rotation with/without load, mm	25	25

*PA... Polyamide



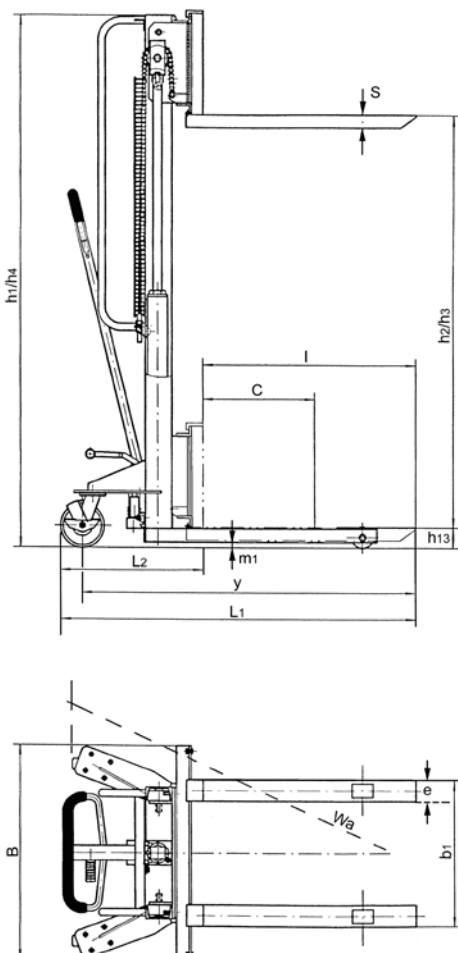
Manual drive stacker with manual-hydraulic lift model HV 0516

Capacity 500 kg

Ideal for the occasional, internal application of stacking and transporting of palletised goods, loading and unloading of shelves and lorries.

Features

- Ergonomic safety control handle for one-hand operation of lifting, driving and lowering.
- Handlebars for easy operation.
- Lowering speed can be finely metered for sensitive lowering of the load.
- Single-acting hand pump with increased lift per handle stroke.
- Robust mast construction with hard chromium plated piston.
- Steering roller with brake for safe parking of the hand stacker.



Technical data model HV 0516

Model	HV 0516
Art.-No.	040005551
Capacity, kg	500
Load center c, mm	600
Wheelbase y, mm	1630
Weight, kg	217
Tyre type*	PUR/PUR
Steering rollers, mm	150x40
Load rollers, mm	80x35
Number of wheels/load rollers	2/2
Height, mast retracted h1, mm	2000
Free lift h2, mm	1520
Stroke h3, mm	1520
Height, mast extended h4, mm	2000
Lifting height max. h3 + h13, mm	1600
Fork height lowered h13, mm	90
Overall length L1, mm	1650
Length incl. apron L2, mm	500
Overall width B, mm	800
Fork height s, mm	45
Fork width e, mm	100
Fork length l, mm	1150
Outside dimension of forks adjustable up to b1, mm	200/770
Ground clearance m1, mm	25
Turning circle radius Wa, mm	1500
Lift per one crank rotation with/without load, mm	32

*PUR... Polyurethane



Manual drive stacker model HV 1008

Manual drive stacker model HV 1016

Capacity 1000 kg

Ideal for the occasional, internal application of stacking and transporting of palletised goods.

Features

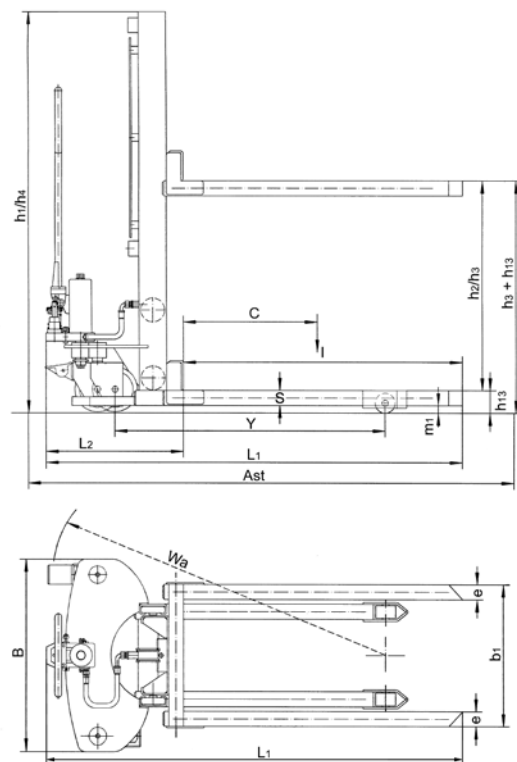
- Ergonomic safety control handle for one-hand operation of lifting, driving and lowering.
- Easy handling due to forced steering rollers.
- Lowering speed can be finely metered for sensitive lowering of the load.
- Single-acting hand pump with increased lift per handle stroke.
- Quick-lift for loads up to 100 kg.
- Robust mast construction with hard chromium plated piston.
- Steering roller with brake for safe parking of the hand stacker.



Technical data model HV 1008 and model HV 1016

Model	HV 1008	HV 1016
Art.-No.	034518032	034518030
Capacity, kg	1000	1000
Load center c, mm	600	600
Wheelbase y, mm	1075	1075
Weight, kg	179	205
Tyre type*	PUR/PUR	PUR/PUR
Steering rollers, mm	180x50	180x50
Load rollers, mm	80x55	80x55
Number of wheels/load rollers	2/2	2/2
Height, mast retracted h1, mm	1300	1965
Free lift h2, mm	810	1510
Stroke h3, mm	810	1510
Height, mast extended h4, mm	1300	1965
Lifting height max. h3 + h13, mm	900	1600
Fork height lowered h13, mm	90	90
Overall length L1, mm	1675	1675
Length incl. apron L2, mm	552	552
Overall width B, mm	765	765
Fork height s, mm	60	60
Fork width e, mm	60	60
Fork length l, mm	1122	1122
Outside dimension of forks b1, mm	570	570
Ground clearance m1, mm	25	25
Aisle width pallet Ast, mm	1875	1875
Turning circle radius Wa, mm	1445	1445
Lift per one crank rotation with/without load, mm	17/50	17/50

*PUR... Polyurethane



Manual drive stacker with electric-hydraulic lift, model EHH PSE

Capacity 1000 kg,
fork height max. 3000 mm

Suitable for occasional to medium applications of stacking and transporting palletized loads, also for use in confined areas and for short distances.

Features

- Good maneuverability and easy handling due to positive steering of the unit.
- Compact electric-hydraulic lifting device and overload protection.
- Finely metered lowering of load through pressure relief valve and adjustable lowering valve.
- Retention by parking brake.
- Robust frame with two load and two steer rollers.
- The maintenance free battery can be charged at any 230V plug socket.

Scope of delivery

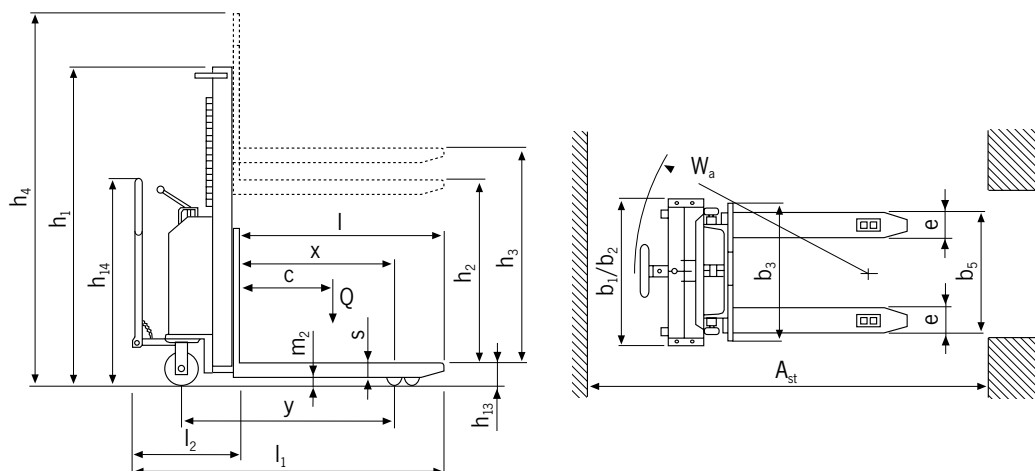
- Battery and battery charger included.



Technical data model EHH PSE

Model	EHH PSE 1016	EHH PSE 1025	EHH PSE 1030
Art.-No.	040050660	040050661	040050662
Capacity (up to 2.5 m lift), kg	1000	1000	1000
Load center c, mm	600	600	600
Wheelbase y, mm	1160	1160	1160
Weight (with battery), kg	395	455	475
Tyre type*	PA/PUR	PA/PUR	PA/PUR
Steering rollers, mm	180x50	180x50	180x50
Load rollers, mm	74x70	74x70	74x70
Number of wheels/load rollers	2/4	2/4	2/4
Height, mast retracted h1, mm	1980	1830	2080
Free lift h2, mm	1415	-	-
Stroke h3, mm	1515	2415	2915
Height, mast extended h4, mm	2030	3020	3515
Lifting height max. h3 + h13, mm	1600	2500	3000
Fork height lowered h13, mm	85	85	85
Overall length L1, mm	1720	1720	1720
Length incl. apron L2, mm	555	555	555
Overall width b1/b2, mm	765	765	765
Fork height s, mm	60	60	60
Fork width e, mm	180	180	180
Fork length l, mm	1100	1100	1100
Outside dimension of forks b5, mm	570	570	570
Ground clearance m2, mm	25	25	25
Aisle width pallet Ast, mm	2145	2145	2145
Turning circle radius Wa, mm	1280	1280	1280
Lifting speed with/without load, m/s	0.08/0.13	0.08/0.13	0.08/0.13
Lowering speed with/without load, m/s	0.42/0.19	0.42/0.19	0.42/0.19
Hoist motor rating, kW	1.5	1.5	1.5
Battery according to DIN 43531	small traction battery	small traction battery	small traction battery
Battery charger, V/A	12/20 A	12/20 A	12/20 A
Battery voltage, capacity, V/Ah	12/150	12/150	12/150

*PA... Polyamide, PUR... Polyurethane



Manual drive stacker with electric-hydraulic lift, model EHH PS

Capacity 1000 - 1200 kg,
fork height max. 3500 mm

Suitable for occasional to medium applications of stacking
and transporting palletised loads, also in confined areas.

Features

- Easy to operate via tie-rod guides to both steer wheels.
- Compact electric-hydraulic lifting device and overload protection.
- Finely metered lowering of load through pressure relief valve and adjustable lowering valve.
- Mast welded from precision profiles, fork carriage with maintenance free guide rollers.
- Retention by parking brake.
- Robust frame with two load and two steer rollers.

Scope of delivery

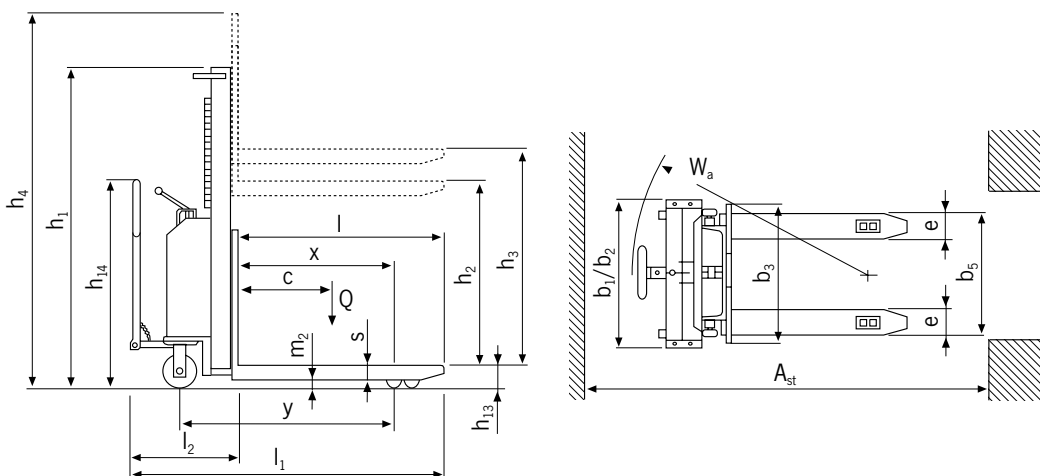
- Battery and battery charger included.



Technical data model EHH PS

Model	EHH PS 1009	EHH PS 1016	EHH PS 1020	EHH PS 1225	EHH PS 1229	EHH PS 1235
Art.-No.	040046051	040044422	040044423	040044424	040044425	040044426
Capacity (up to 2.5 m lift), kg	1000	1000	1000	1200	1200	1200
Load center c, mm	600	600	600	600	600	600
Wheelbase y, mm	965	965	965	1155	1155	1155
Weight (with battery), kg	296	311	321	433	449	496
Tyre type*	VG/PA	VG/PA	VG/PA	PUR/PA	PUR/PA	PUR/PA
Steering rollers, mm	200x50	200x50	200x50	200x50	200x50	200x50
Load rollers, mm	82x70	82x70	82x70	82x70	82x70	82x70
Number of wheels/load rollers	2/2	2/2	2/2	2/2	2/2	2/2
Height, mast retracted h1, mm	1300	1970	2370	1780	1980	2250
Free lift h2, mm	810	1510	1910	-	-	80
Stroke h3, mm	810	1510	1910	2410	2810	3410
Height, mast extended h4, mm	1300	1970	2370	2985	3385	3915
Lifting height max. h3 + h13, mm	900	1600	2000	2500	2900	3500
Fork height lowered h13, mm	90	90	90	90	90	90
Overall length L1, mm	1750	1750	1750	1850	1850	1850
Length incl. apron L2, mm	600	600	600	700	700	700
Overall width b1/b2, mm	750	750	750	850	850	850
Fork height s, mm	70	70	70	70	70	70
Fork width e, mm	150	150	150	150	150	150
Fork length l, mm	1150	1150	1150	1150	1150	1150
Outside dimension of forks b5, mm	560	560	560	560	560	560
Ground clearance m2, mm	20	20	20	20	20	20
Aisle width pallet Ast, mm	2210	2210	2210	2375	2375	2375
Turning circle radius Wa, mm	1440	1440	1440	1760	1760	1760
Lifting speed with/without load, m/s	0.09/0.12	0.09/0.12	0.09/0.12	0.08/0.12	0.08/0.12	0.08/0.12
Lowering speed with/without load, m/s	0.4/0.1	0.4/0.1	0.4/0.1	0.4/0.1	0.4/0.1	0.4/0.1
Hoist motor rating, kW	1.6	1.6	1.6	2.2	2,2	2.2
Battery according to DIN 43531	starter	starter	starter	starter	starter	starter
Battery charger, V/A	12/10	12/10	12/10	24/10	24/10	24/10
Battery voltage, capacity, V/Ah	12/74	12/74	12/74	24/74	24/74	24/74

*PA... Polyamide, PUR... Polyurethane, VG... Solid rubber



Electric pedestrian stacker model EGV PSL

Capacity 1000 - 1200 kg,
fork height max. 3500 mm

Ideal for stacking and transportation of palletised goods within a warehouse environment for short haul and medium work load applications.

Features

- Multifunctional control handle for easy handling. The electric pallet lift truck will automatically be slowed down if the control handle is no longer in the users hand.
- Reliable impulse control for stepless regulation of drive speed.
- Compact electric-hydraulic lifting device and overload protection.
- Finely metered lowering of load through pressure relief valve and adjustable lowering valve.
- Mast welded from precision profiles, fork carriage with maintenance free guide rollers.
- Solid frame with one drive wheel and two load and two guide rollers.

Scope of delivery

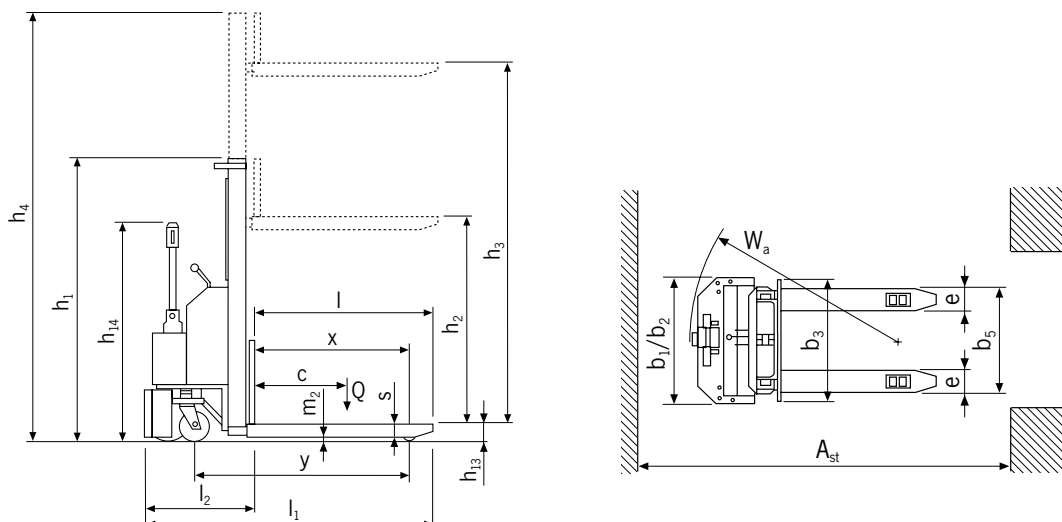
- Battery and battery charger included.



Technical data model EGV PSL

Model	EGV PSL 1016	EGV PSL 1020	EGV PSL 1225	EGV PSL 1229	EGV PSL 1235
Art.-No.	040040502	040044420	040040503	040040504	040044421
Actuation	electric	electric	electric	electric	electric
Operation	pedestrian	pedestrian	pedestrian	pedestrian	pedestrian
Capacity (up to 2.5 m lift), kg	1000	1000	1200	1200	1200
Load center c, mm	600	600	600	600	600
Wheelbase y, mm	1190	1190	1190	1190	1190
Weight (with battery), kg	393	413	481	496	531
Tyre type*	PUR+VG/PUR	PUR+VG/PUR	PUR+VG/PUR	PUR+VG/PUR	PUR+VG/PUR
Steering rollers, mm	240x60+150x40	240x60+150x40	250x76+150x40	250x76+150x40	250x76+150x40
Load rollers, mm	82x70	82x70	82x70	82x70	82x70
Number of wheels/load rollers (x=driven)	2+1x/2	2+1x/2	2+1x/2	2+1x/2	2+1x/2
Height, mast retracted h1, mm	1970	2370	1780	1980	2250
Free lift h2, mm	1510	1910	-	-	80
Stroke, mm	1510	1910	2410	2810	3410
Height, mast extended h4, mm	1970	2370	2985	3385	3915
Fork height max. h3, mm	1600	2000	2500	2900	3500
Height of control handle max., mm	1390	1390	1390	1390	1390
Fork height lowered, mm	90	90	90	90	90
Overall length l+L2, mm	1825	1825	1825	1825	1825
Length incl. apron L2, mm	675	675	675	675	675
Overall width b1/b2, mm	850	850	850	850	850
Fork height s, mm	70	70	70	70	70
Fork width e, mm	150	150	150	150	150
Fork length l, mm	1150	1150	1150	1150	1150
Clearance fork tip-roller, x	365	365	365	365	365
Outside dimension of forks b5, mm	560	560	560	560	560
Ground clearance m2, mm	20	20	20	20	20
Aisle width pallet Ast, mm	2075	2075	2075	2075	2075
Turning circle radius Wa, mm	1460	1460	1460	1460	1460
Travel speed with/without load, km/h	4.0/5.0	4.0/5.0	4.0/5.0	4.0/5.0	4.0/5.0
Lifting speed with/without load, m/s	0.09/0.12	0.09/0.12	0.08/0.12	0.08/0.12	0.08/0.12
Lowering speed with/without load, m/s	0.4/0.1	0.4/0.1	0.4/0.1	0.4/0.1	0.4/0.1
Gradient with/without load, %	5/10	5/10	5/10	5/10	5/10
Service brake	electric	electric	electric	electric	electric
Drive motor rating, kW	0.5	0.5	0.7	0.7	0.7
Hoist motor rating, kW	2.2	2.2	2.2	2.2	2.2
Battery	starter	starter	starter	starter	starter
Battery charger, V/A	24/10	24/10	24/12	24/12	24/12
Battery voltage, V/Ah	24/74	24/74	24/92	24/92	24/92
Type of control	impulse	impulse	impulse	impulse	impulse

*PUR... Polyurethane, VG... Solid rubber



Electric pedestrian stacker model EGV PSH

Capacity 1200 - 1600 kg,
fork height max. 5000 mm

Ideal for stacking and transportation of palletised loads within a warehouse environment for long haul and high work load applications.

Features

- Multifunctional control handle for easy handling. The electric pallet lift truck will automatically be slowed down if the control handle is no longer in the users hand.
- Reliable impulse control for stepless regulation of drive speed.
- Compact electric-hydraulic lifting device and overload protection.
- Finely metered lowering of load through pressure relief valve and adjustable lowering valve.
- Mast welded from precision profiles, fork carriage with maintenance free guide rollers.
- Solid frame with one drive wheel and two load and two guide rollers.
- Battery size depends on the type of application.

Options

- Drivers platform



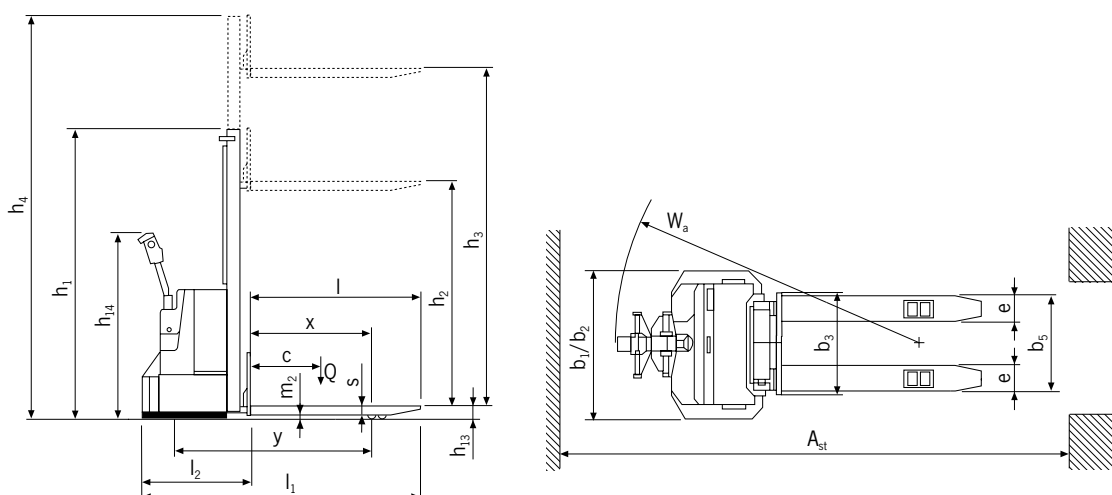
! Battery and battery charger are to be ordered separately.

Technical data model EGV PSH

Model	EGV PSH 1216	EGV PSH 1225	EGV PSH 1229	EGV PSH 1235	EGV PSH 1445
Art.-No.	040046052	040046053	040046054	040046055	040046056
Actuation	electric	electric	electric	electric	electric
Operation	pedestrian	pedestrian	pedestrian	pedestrian	pedestrian
Capacity (up to 2.5 m lift), kg	1200	1200	1200	1200	1400
Load center c, mm	600	600	600	600	600
Wheelbase y, mm	1363	1363	1363	1363	1429
Weight (with battery 180 Ah), kg	650	725	780	790	1010
Tyre type*	PUR+VG/PUR	PUR+VG/PUR	PUR+VG/PUR	PUR+VG/PUR	PUR+VG/PUR
Steering rollers, mm	250x76+125x50	250x76+125x50	250x76+125x50	250x76+125x50	250x101+125x50
Load rollers, mm	82x70	82x70	82x70	82x70	82x70
Number of wheels/load rollers (x=driven)	2+1x/2	2+1x/2	2+1x/2	2+1x/2	2+1x/4
Height, mast retracted h1, mm	1965	1765	1965	2265	2099
Free lift h2, mm	1510	-	-	-	-
Stroke, mm	1510	2410	2810	3410	4410
Height, mast extended h4, mm	1965	2970	3370	3970	5039
Fork height max. h3, mm	1600	2500	2900	3500	4500
Height of control handle max., mm	1385	1385	1385	1385	1385
Fork height lowered, mm	90	90	90	90	90
Overall length L1, mm	1964	1964	1964	1964	2001
Length incl. apron L2, mm	809	809	809	809	851
Overall width b1/b2, mm	850	850	850	850	850
Fork height s, mm	70	70	70	70	70
Fork width e, mm	170	170	170	170	170
Fork length l, mm	1150	1150	1150	1150	1150
Outside dimension of forks b5, mm	560	560	560	560	560
Ground clearance, mm	20	20	20	20	20
Aisle width pallet Ast, mm	2228	2228	2228	2228	2252
Turning circle radius Wa, mm	1586	1586	1586	1586	1649
Travel speed with/without load, km/h	5.5/6	5.5/6	5.5/6	5.5/6	5.5/6
Lifting speed with/without load, m/s	0.09/0.15	0.09/0.15	0.09/0.15	0.09/0.15	0.13/0.17
Lowering speed with/without load, m/s	0.4/0.1	0.4/0.1	0.4/0.1	0.4/0.1	0.4/0.1
Gradient max. with/without load, %	5/10	5/10	5/10	5/10	5/10
Service brake	electric	electric	electric	electric	electric
Drive motor rating, kW	1.2	1.2	1.2	1.2	1.2
Hoist motor rating, kW	2.5	2.5	2.5	2.5	3.0
Battery**	PzS	PzS	PzS	PzS	PzS
Battery voltage, V/Ah	24/180-210-315	24/180-210-315	24/180-210-315	24/180-210-315	24/180-210-315
Battery weight, kg	200-285	200-285	200-285	200-285	200-285
Type of control	impulse	impulse	impulse	impulse	impulse

*PUR... Polyurethane, VG... Solid rubber

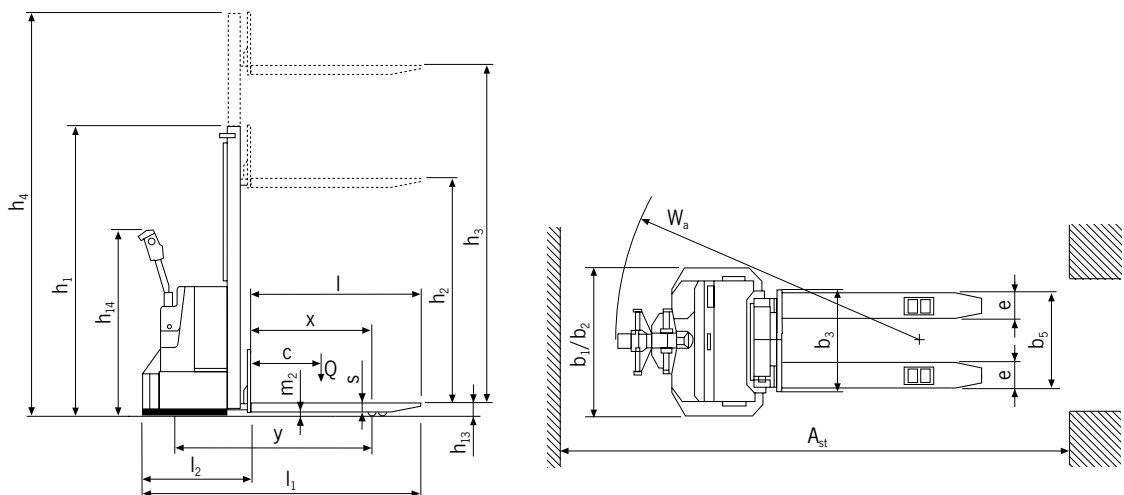
**PzS... Traction battery



Technical data model EGV PSH

Model	EGV PSH 1445 FL	EGV PSH 1450	EGV PSH 1616	EGV PSH 1625	EGV PSH 1629	EGV PSH 1635
Art.-No.	040046057	040046058	040046059	040046060	040040501	040046061
Actuation	electric	electric	electric	electric	electric	electric
Operation	pedestrian	pedestrian	pedestrian	pedestrian	pedestrian	pedestrian
Capacity (up to 2.5 m lift), kg	1400	1400	1600	1600	1600	1600
Load center c, mm	600	600	600	600	600	600
Wheelbase y, mm	1429	1429	1429	1429	1429	1429
Weight (with battery 180Ah), kg	1069	1088	754	849	874	914
Tyre type*	PUR+VG/PUR	PUR+VG/PUR	PUR+VG/PUR	PUR+VG/PUR	PUR+VG/PUR	PUR+VG/PUR
Steering rollers, mm	250x101+125x50	250x101+125x50	250x101+125x50	250x101+125x50	250x101+125x50	250x101+125x50
Load rollers, mm	82x70	82x70	82x70	82x70	82x70	82x70
Number of wheels/load rollers***	2+1x/4	2+1x/4	2+1x/4	2+1x/4	2+1x/4	2+1x/4
Height, mast retracted h1, mm	2132	2266	1965	1765	1965	2265
Free lift h2, mm	1510	-	1510	-	-	-
Stroke, mm	4410	4910	1510	2410	2810	3410
Height, mast extended h4, mm	5072	5540	1965	2970	3370	3970
Fork height max. h3, mm	4500	5000	1600	2500	2900	3500
Height of control handle max., mm	1385	1385	1385	1385	1385	1385
Fork height lowered, mm	90	90	90	90	90	90
Overall length L1, mm	2001	2001	1991	1991	1991	1991
Length incl. apron L2, mm	851	851	841	841	841	841
Overall width b1/b2, mm	850	850	850	850	850	850
Fork height s, mm	70	70	70	70	70	70
Fork width e, mm	170	170	170	170	170	170
Fork length l, mm	1150	1150	1150	1150	1150	1150
Outside dimension of forks b5, mm	560	560	560	560	560	560
Ground clearance, mm	20	20	20	20	20	20
Aisle width pallet Ast, mm	2252	2252	2241	2241	2241	2241
Turning circle radius Wa, mm	1649	1649	1649	1649	1649	1649
Travel speed with/without load, km/h	5.5/6	5.5/6	5.5/6	5.5/6	5.5/6	5.5/6
Lifting speed with/without load, m/s	0.12/0.17	0.13/0.17	0.08/0.12	0.08/0.12	0.08/0.12	0.08/0.12
Lowering speed with/without load, m/s	0.4/0.1	0.4/0.1	0.4/0.1	0.4/0.1	0.4/0.1	0.4/0.1
Gradient max. with/without load, %	5/10	5/10	5/10	5/10	5/10	5/10
Service brake	electric	electric	electric	electric	electric	electric
Drive motor rating, kW	1.2	1.2	1.2	1.2	1.2	1.2
Hoist motor rating, kW	3.0	3.0	2.5	2,5	2.5	2,5
Battery**	PzS	PzS	PzS	PzS	PzS	PzS
Battery voltage, V/Ah	24/180-210-315	24/180-210-315	24/180-210-315	24/180-210-315	24/180-210-315	24/180-210-315
Battery weight, kg	200-285	200-285	200-285	200-285	200-285	200-285
Type of control	impulse	impulse	impulse	impulse	impulse	impulse

*PUR ... Polyurethane, VG ... Solid rubber **PzS ... Traction battery
 ***(x=driven)



Platformlift model PRAKTIKUS HP

Capacity 200 - 400 kg,
platform height max. 1200 mm

For the occasional, internal application of lifting and transporting of goods.

Features

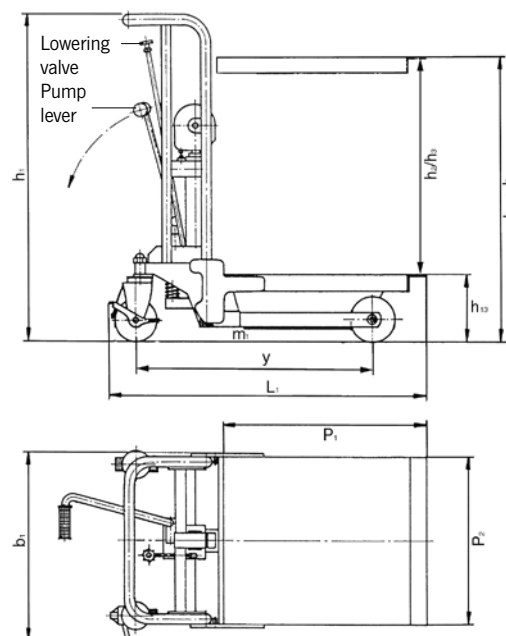
- Easy lifting by tiltable foot pedal.
- Lowering speed can be finely metered for sensitive lowering of the load.
- Ergonomic handlebar for easy operation.
- Steering roller with brake for safe parking of the hand stacker.
- Robust construction with chrome plated chassis, hard chromium plated piston and pressure relief valve.
- Covered chain deflection for increased safety.



Technical data model PRAKTIKUS HP

Model	HP 0285	HP 0212	HP 0485	HP 0412
Art.-No.	040008776	040008777	040008778	040008779
Capacity, kg	200	200	400	400
Platform height max. $h_3 + h_{13}$, mm	850	1200	850	1200
Platform height min. h_{13} , mm	200	200	200	200
Free lift h_2 , mm	650	1000	650	1000
Stroke h_3 , mm	650	1000	650	1000
Lifting height per pump stroke, mm	23	23	23	23
Overall height h_1 , mm	960	1310	960	1310
Overall length L_1 , mm	1037	1037	1037	1037
Overall width b_1 , mm	590	590	590	590
Platform length P_1 , mm	650	650	650	650
Platform width P_2 , mm	550	550	550	550
Tyre type*	VG/VG	VG/VG	VG/VG	VG/VG
Steering rollers, mm	150x45	150x45	150x45	150x45
Load rollers, mm	150x45	150x45	150x45	150x45
Number of wheels/load rollers	2/2	2/2	2/2	2/2
Ground clearance m_1 , mm	50	50	50	50
Wheelbase y , mm	785	785	785	785
Weight, kg	65	70	66	71

*VG... Solid rubber



Scissor elevating platform, mobile with single scissor model HX

Capacity 150 - 750 kg,
platform height max. 1000 mm

For the independent lifting and supplying of loads within a warehouse environment.

Features

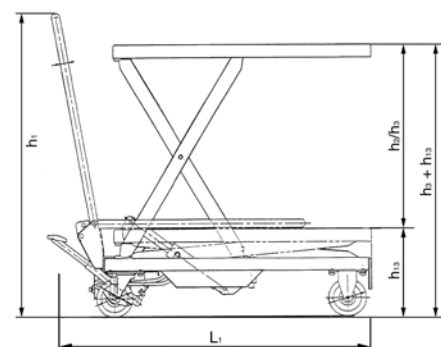
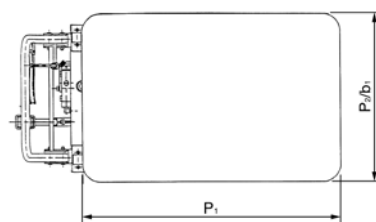
- Hydraulic lifting of the load with foot pedal.
- Lowering speed can be finely metered for sensitive lowering of the load.
- Ergonomic handlebar for easy operation, tiltable for model HX 150.
- Steering roller with brake for safe parking of the hand stacker.
- Robust construction with hard chromium plated piston and pressure relief valve.



Technical data model HX

Model	HX 150	HX 300	HX 500	HX 750
Art.-No.	034600020	040057357	040057358	040057360
Capacity, kg	150	300	500	750
Platform height max. $h_3 + h_{13}$, mm	720	880	880	1000
Platform height min. h_{13} , mm	220	285	285	420
Stroke h_3 , mm	500	595	595	580
Lifting height per pump stroke, mm	27	31	31	15
Overall height h_1 , mm	960	984	984	990
Overall length L_1 , mm	908	1093	1093	1330
Overall width b_1 , mm	450	500	500	600
Platform length P_1 , mm	700	850	850	1000
Platform width P_2 , mm	450	500	500	510
Tyre type*	PUR/PUR	PUR/PUR	PUR/PUR	PUR/PUR
Rollers, mm	100 x 36	128 x 40	128 x 40	147 x 50
Number of wheels/load rollers	2/2	2/2	2/2	2/2
Weight, kg	49	78	82	120

*PUR... Polyurethane



Scissor elevating platform, mobile with double scissor model HX-D

Capacity 350 kg,
platform height max. 1300 mm

For the independant lifting and supplying of light up to medium loads within a warehouse environment.

Features

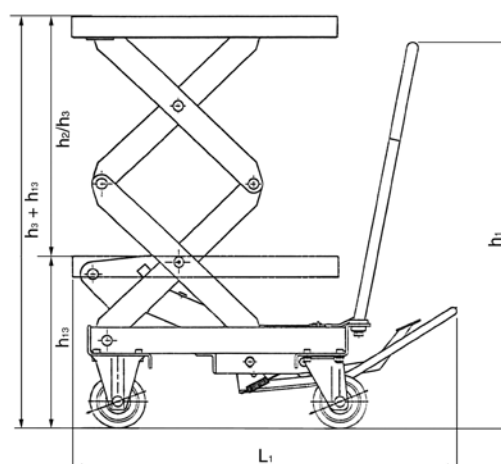
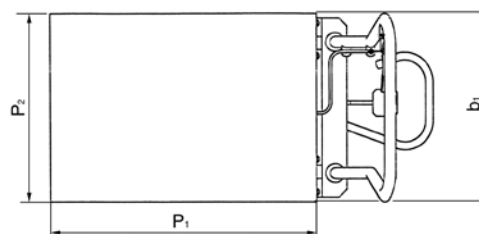
- Hydraulic lifting of the load with foot pedal.
- Lowering speed can be finely metered for sensitive lowering of the load.
- Ergonomic handlebar for easy operation.
- Steering roller with brake for safe parking of the hand stacker.
- Robust construction with hard chromium plated piston and pressure relief valve.
- According to EN 1570, prEN 1757-4.



Technical data model HX-D

Model	HX-D 350
Art.-No.	040057361
Capacity, kg	350
Platform height max. $h_3 + h_{13}$, mm	1300
Platform height min. h_{13} , mm	370
Stroke h_3 , mm	930
Lifting height per pump stroke, mm	21
Overall height h_1 , mm	965
Overall length L_1 , mm	1140
Overall width b_1 , mm	500
Platform length P_1 , mm	910
Platform width P_2 , mm	500
Tyre type*	PUR/PUR
Load rollers, mm	128x40
Number of wheels/load rollers	2/2
Weight, kg	136

*PUR... Polyurethane





**Scissor elevating platform,
mobile with single scissor and
- manual hydraulic
model HF...SM**

Capacity 150 - 1250 kg,
platform height max. 1050 mm

**- electric hydraulic system
model HF...SE**

Capacity 300 - 1250 kg,
platform height max. 1050 mm

For lifting and supplying goods independent of the
location.

Features

- Manual hydraulic system with pedal or electric hydraulic system with dead man function – a main current connection is not required.
- High safety due to pressure relief and lowering valve.
- Robust single scissor construction, above 300 kg with solid steer scissor.
- Pivoting platform with mechanic adjustment for safe maintenance work.
- Compact design with low OAH.
- Steering and fixed rollers with service-free roller bearings. One steer roller can be locked in position for parking.
- According to EN 1570 and machinery directive 2006/42/EG.



Scope of delivery

- Models with electric-hydraulic pump are supplied complete with battery and charger.

Technical data model HF/SM

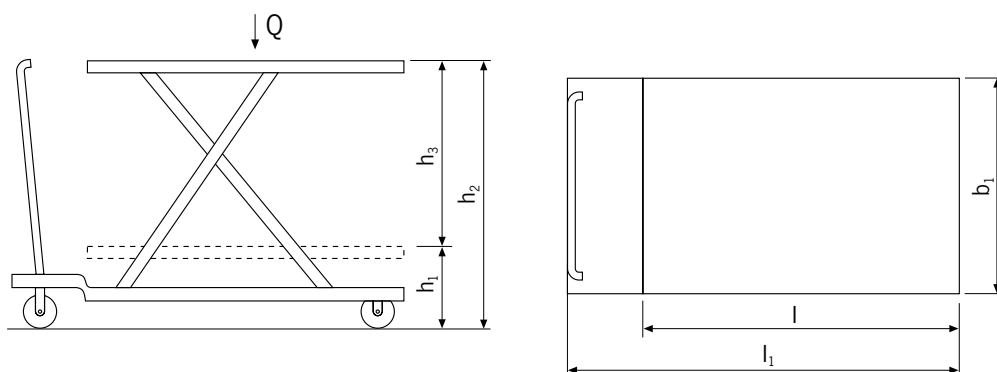
Model	HF 015-078 SM	HF 030-084 SM	HF 050-090 SM	HF 080-105 SM	HF 100-105 SM	HF 125-105 SM
Art.-No.	24501078	24503084	24505090	24508105	24510105	24512105
Capacity, kg	150	300	500	800	1000	1250
Platform height max. h ₂ , mm	780	840	900	1050	1050	1050
Platform height min. h ₁ , mm	255	335	340	360	360	360
Stroke h ₃ , mm	525	505	560	690	690	690
Overall length l ₁ , mm	990	1050	1320	1650	2350	1650
Overall width b ₁ , mm	450	500	610	860	1000	860
Platform length l, mm	760	840	1030	1350	2000	1350
Platform width b ₁ , mm	450	500	610	840	1000	840
Tyre type**	VG	PUR	PUR	PA	PA	PA
Service brake	manual	manual	manual	manual	manual	manual
Number of strokes for max. lift	14	18	29	40	80	80
Weight (with battery and battery charger), kg	41	83	109	222	350	230

**PA... Polyamide, PUR... Polyurethane, VG... Solid rubber

Technical data model HF/SE

Model	HF 030-084 SE	HF 050-090 SE	HF 080-105 SE	HF 100-105 SE	HF 125-105 SE
Art.-No.	24603084	24605090	24608105	24610105	24612105
Capacity, kg	300	500	800	1000	1250
Platform height max. h ₂ , mm	840	900	1050	1050	1050
Platform height min. h ₁ , mm	335	340	360	360	360
Stroke h ₃ , mm	505	560	690	690	690
Overall length l ₁ , mm	1130	1330	1650	2350	1650
Overall width b ₁ , mm	500	610	860	1000	860
Platform length l, mm	840	1030	1350	2000	1350
Platform width b ₁ , mm	500	610	840	1000	840
Tyre type**	PUR	PUR	PA	PA	PA
Service brake	manual	manual	manual	manual	manual
Number of strokes for max. lift	electric	electric	electric	electric	electric
Weight (with battery and battery charger), kg	120	158	270	397	278

** PA... Polyamide, PUR... Polyurethane





Scissor elevating platform,
mobile with double vertical
scissor and
- manual hydraulic
model HF...DM
- electric hydraulic system
model HF...DE

Capacity 125 - 800 kg,
platform height max. 1900 mm

For lifting and supplying goods independent of the
location.

Features

- Manual hydraulic system with pedal or electric hydraulic system with dead man function – a main current connection is not required.
- High safety due to pressure relief and lowering valve.
- Robust single scissor construction, above 300 kg with solid steer scissor.
- Pivoting platform with mechanic adjustment for safe maintenance work.
- Compact design with low OAH.
- Steering and fixed rollers with service-free roller bearings. One steer roller can be locked in position for parking.
- According to EN 1570 and machinery directive 2006/42/EG.



Scope of delivery

- Models with electric-hydraulic pump are supplied complete with battery and charger.

Technical data model HF/DM

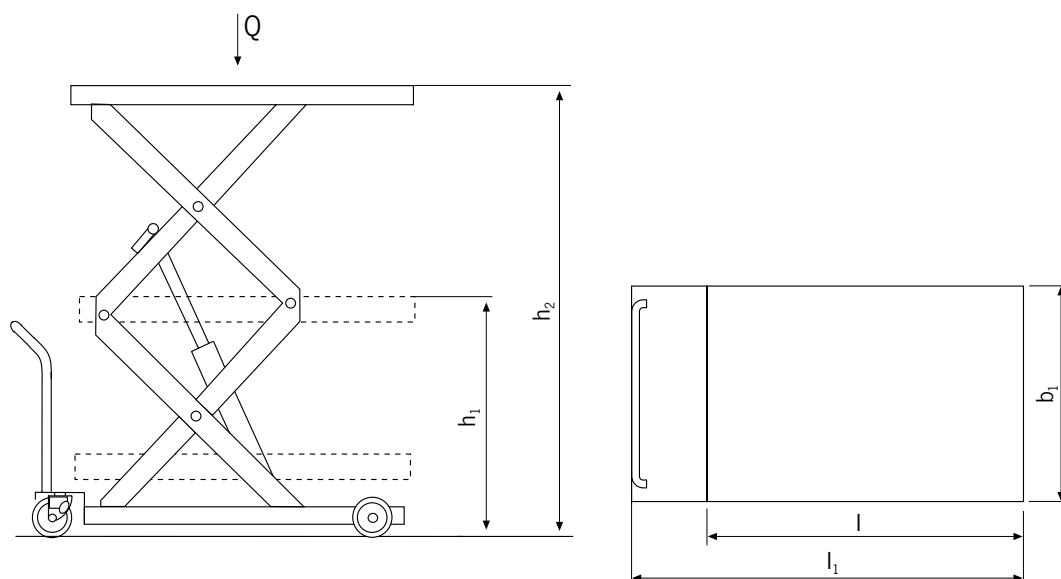
Model	HF 012-142 DM	HF 045-155 DM	HF 050-190 DM	HF 080-190 DM
Art.-No.	24701142	24704155	24705190	24708190
Capacity, kg	125	450	500	800
Platform height max. h ₂ , mm	1420	1550	1900	1900
Platform height min. h ₁ , mm	430	295	490	490
Stroke h ₃ , mm	990	1255	1410	1410
Overall length l ₁ , mm	1090	1350	1650	1650
Overall width b ₁ , mm	500	665	860	860
Platform length l, mm	840	1030	1350	1350
Platform width b ₁ , mm	500	610	840	840
Tyre type**	PUR	PUR	PA	PA
Service brake	manual	manual	manual	manual
Number of strokes for max. lift	19	71	80	160
Weight (with battery and battery charger), kg	100	143	306	315

**PA... Polyamide, PUR... Polyurethane

Technical data model HF/DE

Model	HF 012-142 DE	HF 045-155 DE	HF 050-190 DE	HF 080-190 DE
Art.-No.	24801142	24804155	24805190	24808190
Capacity, kg	125	450	500	800
Platform height max. h ₂ , mm	1420	1550	1900	1900
Platform height min. h ₁ , mm	430	295	490	490
Stroke h ₃ , mm	990	1255	1410	1410
Overall length l ₁ , mm	1090	1350	1650	1650
Overall width b ₁ , mm	500	665	860	860
Platform length l, mm	840	1030	1350	1350
Platform width b ₁ , mm	500	610	840	840
Tyre type**	PUR	PUR	PA	PA
Service brake	manual	manual	manual	manual
Number of strokes for max. lift	electric	electric	electric	electric
Weight (with battery and battery charger), kg	147	190	352	363

**PA... Polyamide, PUR... Polyurethane





Mobile elevating work bench model HW

Capacity 1000 kg,
platform height max. 1320 mm

For lifting and transporting of heavy loads in manufacturing and assembly processes.

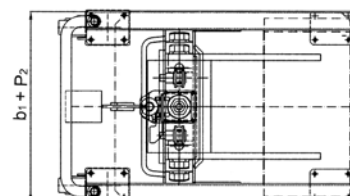
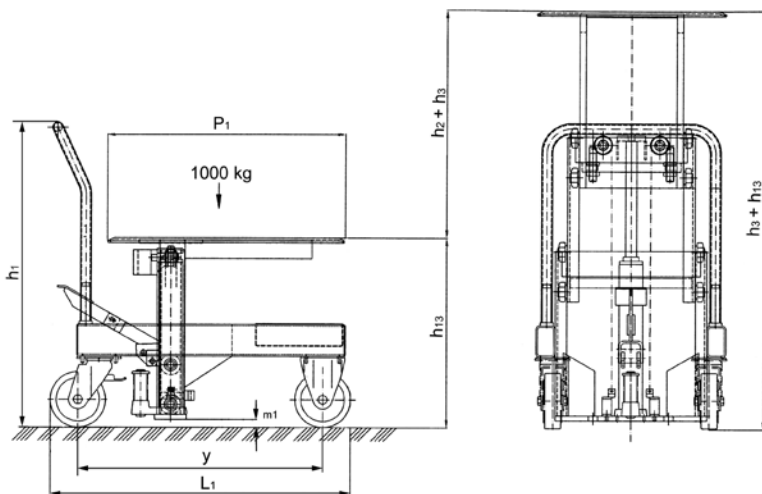
Features

- Hydraulic lifting and lowering of the load with foot pedal.
- Lowering speed can be finely metered for sensitive lowering of the load.
- Ergonomic handlebar for easy operation.
- Steering roller with brake for safe parking of the hand stacker.
- Robust construction with hard chromium plated piston and pressure relief valve.

Technical data model HW 10

Model	HW 10
Art.-No.	040007617
Capacity, kg	1000
Platform height max. $h_3 + h_{13}$, mm	1270
Platform height min. h_{13} , mm	600
Overall height h_1 , mm	950
Free lift h_2 , mm	720
Stroke h_3 , mm	720
Overall length L_1 , mm	947
Platform length P_1 , mm	750
Platform width P_2 , mm	600
Overall width b_1 , mm	600
Tyre type*	PA/PA
Steering rollers, mm	175 x 50
Load rollers, mm	175 x 50
Number of wheels/load rollers	2/2
Wheelbase y , mm	772
Weight, kg	160
Ground clearance m_1 , mm	25
Lifting height per pump stroke, mm	9

*PA... Polyamide



Flat scissor lifting table model HTF-G SILVERLINE

Capacity 1000 kg

For the professional lifting and handling of loads within a warehouse environment.

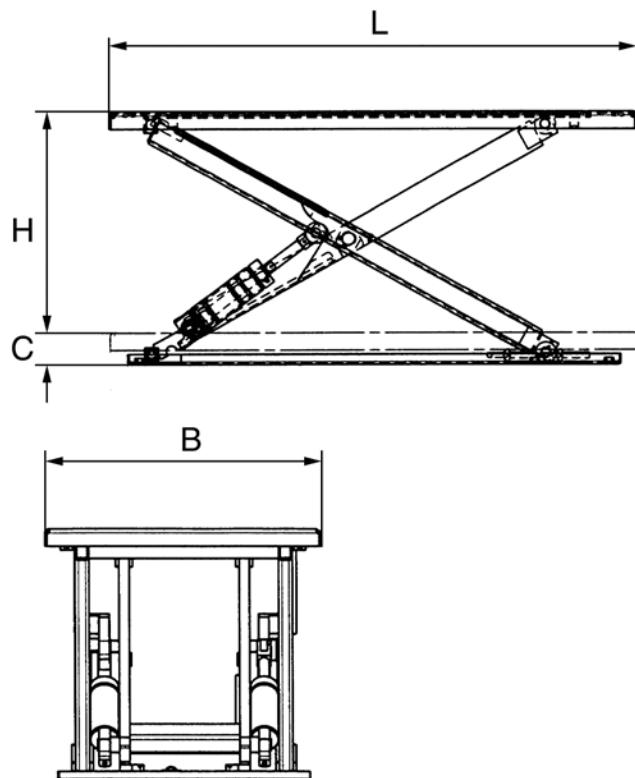
Features

- Extremely low-profile design reducing cost and effort for a pit-installation
- The ramp allows loading the platform directly with a pallet truck or trolley
- Safe operation due to push-button for up/down in dead man's control, as well as emergency stop
- Overload protection by pressure control valve
- According to EN 1570-1 and all UVV safety regulations



Technical data model HTF-G SILVERLINE

Model	HTF-G
Art.-No.	040047380
Lifting capacity, t	1.0
Platform length L, m	1.45
Platform width B, m	1.14
Overall height C, mm	82
Lift H, m	0.76
Lifting time, sec	18
Motor power, kW	0.75
Weight, kg	250



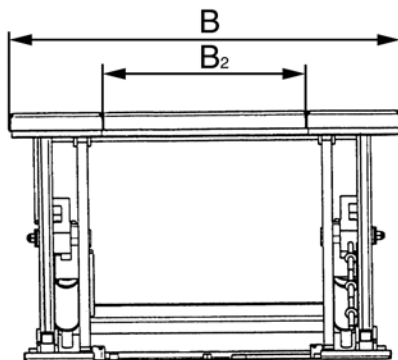
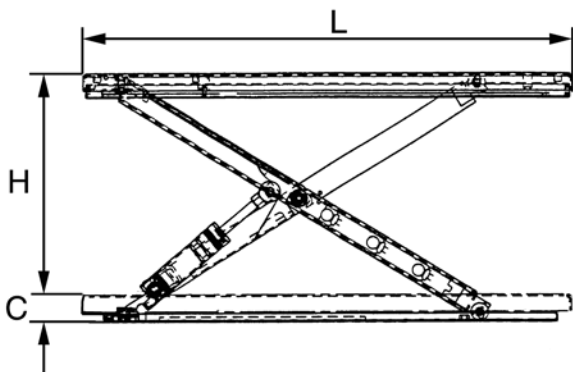
Flat scissor lifting table model HTF-U SILVERLINE

Capacity 1000 kg

For the professional lifting and handling of loads within a warehouse environment.

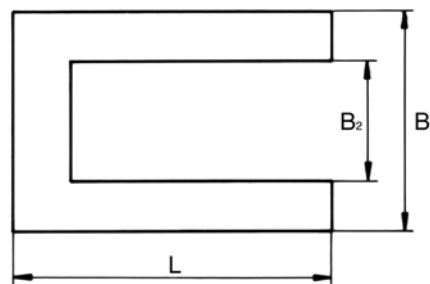
Features

- Extremely low-profile design lowering the cost and effort for a pit installation
- U-design for direct access of industrial trucks
- Safe operation due to push-button for up/down in dead man's control, as well as emergency stop
- Overload protection by pressure control valve
- According to EN 1570-1 and all UVV safety regulations



Technical data model HTF-U SILVERLINE

Model	HTF-U
Art.-No.	040047381
Lifting capacity, t	1.0
Platform B2, mm	585
Platform length L, m	1.45
Platform width B, m	1.14
Overall height C, mm	80
Lift H, m	0.76
Lifting time, sec	18
Motor, kW	0.75
Weight, kg	235



Handling table model HTH-E SILVERLINE

Capacity 500 - 3.000 kg

For the professional lifting and handling of heavy loads and palletized goods at workplaces.

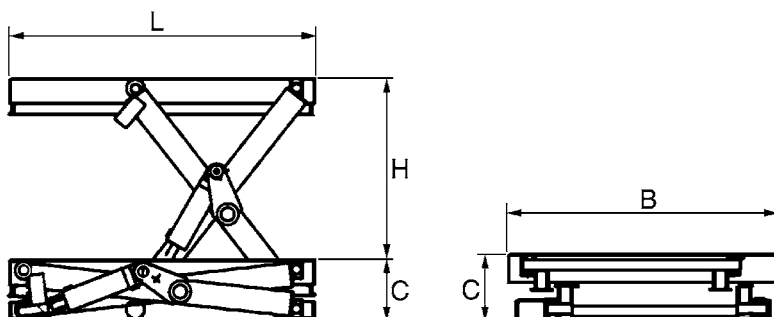
Features

- Smooth hydraulic ram action of working height for ergonomic working conditions
- Safe operation due to push-button for up/down in dead man's control, as well as emergency stop
- Overload protection by pressure control valve
- According to EN 1570-1 and all UVV safety regulations



Technical data model HTH-E SILVERLINE

Model	HTH-E	HTH-E	HTH-E	HTH-E
Art.-No.	040049470	040049471	040049472	040049473
Lifting capacity, t	0.5	1.0	2.0	3.0
Platform length L, m	1.30	1.30	1.30	1.30
Platform width B, m	0.8	0.8	0.8	0.8
Overall height C, mm	190	190	190	220
Lift H, m	0.82	0.82	0.82	0.80
Lifting time, sec	15	25	40	26
Motor, kW	0.75	0.75	0.75	1.50
Weight, kg	160	220	280	320



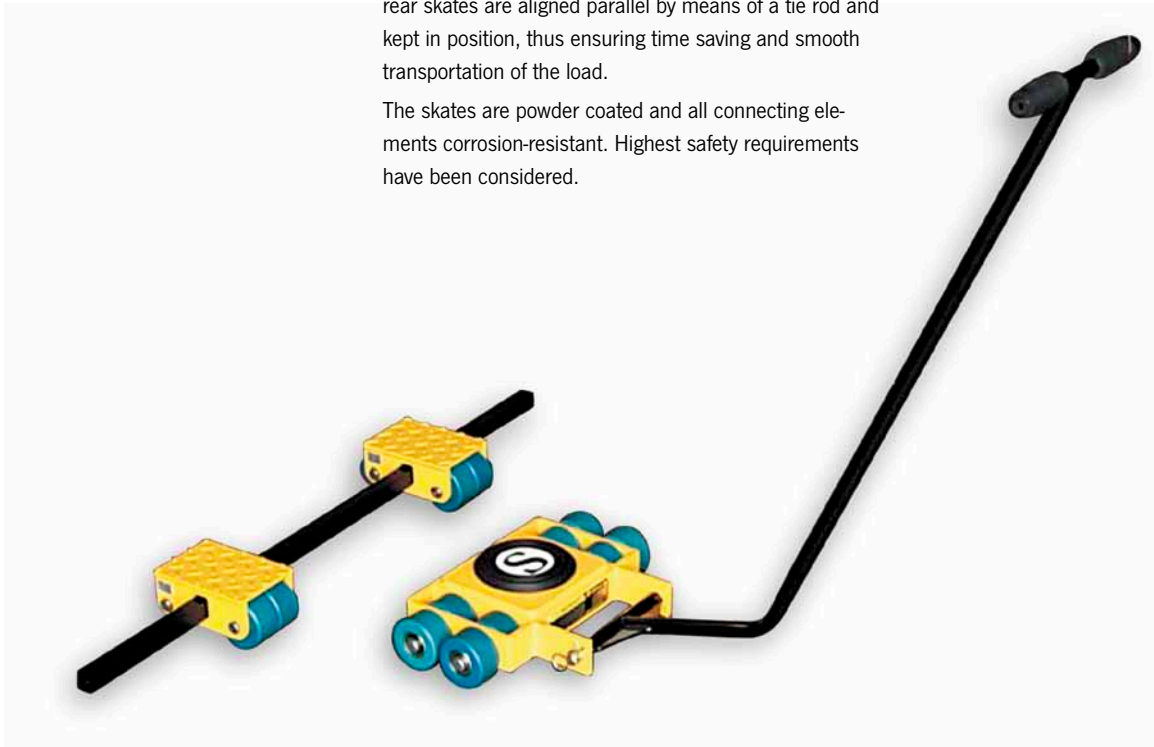
Steerman® Heavy load moving systems model SX and model S

Capacity 10 - 100 t

These universal heavy load moving systems have been designed for the safe and cost saving transport of loads up to 100 tons. Individual configuration of steering and rear skates also allows higher capacities. Transport of heavy loads (e.g. machines, construction parts, steel structures) is normally made with a stable three point loading system.

Transport of extremely bulky or heavy loads with an unfavourable center of balance, may also be executed with a four point loading system. The robust towing bar in connection with the unique turntable on large diameter thrust bearings allows effortless steering of the load. The rear skates are aligned parallel by means of a tie rod and kept in position, thus ensuring time saving and smooth transportation of the load.

The skates are powder coated and all connecting elements corrosion-resistant. Highest safety requirements have been considered.



Rollers with ball bearing



Chassis from ductile graphite iron



Ball bearing for turning plate



Features

- The modular design ensures an extremely simple operation and simultaneously offers a wider range of combinations.
- The construction of the load moving systems is extremely robust and resistant to distortion.
- The skates are smooth-running and provide an incredibly low rolling resistance even with the heaviest loads.
- Twin rollers (instead of one wide roller) ensure low rolling resistance even at a narrow curve radius.
- The universal joint suspension of the roller groups contributes to a positive contact when travelling over uneven floors.
- The roller wheels are manufactured with abrasion-resistant, elastic polyamide. They are protected against breakage and have high chemical resistance.
- Each individual roller is made from high tensile material which ensures extremely quiet running.
- The rollers are suitable for all in-plant floors and will not damage normal floor covering.
- The load moving systems can be easily dismantled and facilitate transport even in small trucks.
- The load moving systems have been developed for professional applications and are practically maintenance-free.
- All rollers are provided with two encapsulated, lifetime lubricated ball bearings.
- The front steering skate is equipped with an amply dimensioned axial ball bearing underneath the turntable.
- From SX-10 the front and rear skates are available individually.



Model S-60

Technical data model SX and model S

Model	EAN-No. 4025092*	Capacity t	Overall height mm	Number of rollers	Roller diameter mm	Colour of rollers	Weight kg
SX-10	*158503	10	102	16	82	black	54
SX-15	*158527	15	102	32	82	blue	76
SX-20	*158541	20	102	32	82	black	76
SX-25	*158565	25	110	48	82	blue	136
SX-30	*158589	30	110	48	82	black	136
S-40	*161923	40	170	48	115	blue	302
S-60	*161930	60	170	48	115	black	302
S-80	*158640	80	210	48	150	blue	525
S-100	*158664	100	210	48	150	black	525



Model LF-1

Load moving skates and systems with fixed wheels model LF

Capacity 1 - 6 t

The components of the load moving skates can be universally combined and are ideal for the transport of medium heavy loads of all kinds.

The components can be used individually or adapted to a load moving system. The units are maintenance-free.

Features

- Solid forged steel construction.
- Anti-slip rubber lining.
- Abrasion-resistant nylon wheels.
- Models LF-2,5 and above are provided with two enclosed ball bearings per wheel.

Technical data model LF

Model	EAN-No. 4025092*	Capacity t	Wheels	Number of wheels	Wheels diameter x width mm	Dimensions L x W x H mm	Weight kg
LF-1	*163828	1.0	fixed	4	100x35	400x228x120	7.0
LF-2	*163835	2.0	fixed	8	100x35	400x228x120	8.0
LF-2,5	*163842	2.5	fixed	2	85x90	275x120x100	4.0
LF-3	*163859	3.0	fixed	4	85x85	400x228x100	9.5
LF-6	*163866	6.0	fixed	6	85x85	415x210x100	12.0



Model LF-2

Model LF-2,5

Model LF-3

Model LF-6

Load moving skates and systems with steerable wheels model LFL

Capacity 1 t

The components of the load moving skates can be universally combined and are ideal for the transport of medium heavy loads of all kinds.

The components can be used individually or adapted to a load moving system. The units are maintenance-free.

Features

- Solid forged steel construction.
- Anti-slip rubber lining.
- Abrasion-resistant nylon wheels.
- Model LFL-1-2 uses two steerable and two fixed wheels.
- Model LFL-1-4 uses four steerable wheels.



Model LFL-1-2

Technical data model LFL

Model	EAN-No. 4025092*	Capacity t	Wheels	Number of rollers	Swivel roller diameter x width mm	Fixed roller diameter x width mm	Dimensions L x W x H mm	Weight kg
LFL-1-2	*163873	1.0	2 x fixed, 2 x steerable	4	75 x 46	100 x 35	430 x 340 x 120	13.0
LFL-1-4	*163880	1.0	4 x steerable	4	75 x 46	-	430 x 340 x 120	14.0



Model LFL-1-4

Load Moving Systems

Heavy load moving system model LX

Capacity 6 t and 12 t

These three point loading systems comprise of a steerable front and a pair of adjustable rear skates.

The heavy load moving systems are supplied ready-to-use.

The steerable front skates (LX-6F and LX-12F) are provided with an appropriate towing bar. The rear skates (LX-12R) are identical in construction and are equipped with two adjustable tie rods.

The wheels are made of hardwearing nylon.

The front and rear skates can accept each 50% of the total capacity.



Technical data model LX

Model	EAN-No. 4025092*	Capacity t	Number of wheels front skate	Number of wheels rear skate	Wheels diameter x width mm	Load area front skate mm	Load area rear skate mm	Adjustment range rear skates mm	Height mm	Weight kg
LX-6	*163781	6.0	4	8	85x90	185x150	300x250	500 - 1400	115	45.0
LX-12	*163798	12.0	8	8	85x90	400x220	300x250	500 - 1400	115	80.0



